



# THE *Cresset*

July/August 2019



News, views and what's on, in and around Bottisham



## ***Bottisham Community Sports and Social Club***

Now that summer is upon us why not take a stroll to the club and enjoy some of the early evening sunshine with friends and family and sample some of our fine range of guest beers, lagers and wines not to mention our very popular gins, all the family are welcome including the dog.

As a committee we would like to thank all our members old and new for their support and custom throughout the first half of this year, we have enjoyed some fantastic events and evenings and we look forward to many more in the coming months, with your continued support.

After the success of last year's Craft Fair we will be holding another one this year, we do have limited spaces so if anyone is interested please leave a name and email address, or phone number with a member of staff at the club and we will contact you with the details.

### **WHATS ON**

- July 20th** **Live Music from Kim Lane**, tickets available at the bar.
- October 26th** **Children's Halloween Disco, Fancy dress.**
- November 16th** **Five Ska** are back sure to be a sell out, book early.
- November 24th** **Craft Fair.**
- New Years Eve** Back by popular request All Glammed Up.

### **FRIDAY NIGHTS**

Our members draw £100 takes place between 9.00 and 10.30, you must be in the club at the time to win it.

Members play your cards right as of June 10th over £3000 and the weekly meat draw are also available. Start the weekend off with a friendly drink and maybe go home a winner.

Don't Forget The Regular Activities For You To Join In And Enjoy  
Darts / Pool / Snooker / Billiards / Cribbage / Dominoes / Bar billiards  
Also

Hall and Poppy Lounge room hire available for all your functions.  
Well behaved dogs are welcome in the main hall only and must be kept on a lead.

At the time of writing my editorial, we have just had the Bottisham Village Fete. Following last year's WI led event, a committed group of people decided after its success, that we should have one again this year.

Despite the best efforts of mother nature to almost literally drown us out, the gods intervened just as yours truly had the honour of declaring the event open and the afternoon stayed dry and the gale that had been blowing most of the morning died away. Even the sun threatened to come out, but only showed herself through the thinning clouds.



The event was a great success with all the fun of the fair and more. The tea tent sold out of cakes. The Community Social Club's bar almost sold out of beer and the various stalls did a roaring trade. Entertainment was all around from the steel band to the racing horses, from the Gymnastic display to the Bowling and Archery. The Morris dancers always make an impact.

A large vote of thanks is due to everybody who was involved in making the afternoon so enjoyable.

If you decided not to come, you missed a great afternoon. If you know a good thing, you will keep an eye out for the date next year when I am sure it will continue as an annual event.

Wild flowers now and the search for whoever sowed the lovely patches of wildflowers out on the A1303 (the contractors?). At each of the road junctions next to the village a bright splash of colour made a delightful change from the perennial cow parsley. Inevitably when the county came to mow the verge, some of the flowers were obliterated. However if we think about that the next time the seeds are scattered (which I hope is done), sowing them close along the line of the hedge front would leave them out of the line of fire for the mowers. Line of sight at the junctions to see approaching traffic is essential for people leaving the village, and the height of the cornflowers and poppies does block the view.

While somebody out there is planting wild flowers we have notice that there will not be a village gardening show this year. It sounds like the old story of not enough people willing to organise the event. Usually well attended on the day and incorporating much more than just plants, last year's event was one of the best in recent years. (The Memsahib still has her '1st' red rosette on her desk!) That is a shame, but perhaps like the village fete there is a younger generation out there who would like to take up the mantle.

With both a letter from our county councillor and a mention in the PC report, cars and buses at the college and the primary school are being told to turn their engines off when stationary at the school. An obvious thing to do one would think.

What I also think would be just as obvious is for all the parents and children within the village to walk to school as some indeed do. The walk would do the kids (and some parents) good and would not only reduce the pollution but the traffic congestion too. It is a strange sight to see children being loaded into a car within a few hundred yards of the school, to be dropped off a few minutes later, before the choke has even had time to stop working (which is when the engine puts out the most pollution!). Allow the extra few minutes, save a few pounds and exercise the family all at the same time. Simple!, as the advert says.

No magazine next month, so have a good summer and see you in September.

*Peter Walker, Your Editor.*

## *Bottisham Village Fete 2019*



After months of hard work and planning, the day of the Fete finally arrived and the weather tested us to our limits! Putting up gazebos in driving rain and 40mph winds was an experience the committee and volunteers are not particularly keen to repeat any time soon. However, the true British spirit got us through it and just as the gates opened, the winds dropped and the rain stopped.

We were delighted (and relieved) to see so many people flooding through the gates. We have had so many wonderful comments about the success of the Fete, and how much people enjoyed the afternoon. There was a real sense of community spirit and support which was fabulous to see.

We had wonderful performances from local groups such as CGA Gymnastics and PWL; the archery, the football and the church games were extremely popular, and of course performances from the Devil's Dyke Morris Men, Fay Childs and George Breakfast, Splitz Theatre Arts and the Panic Steel Band were all fantastic. The "horse riding with a difference" raised the most excitement, particularly from the kids (both young and old!).

There were a lot of people who came together in order to make the fete such a success and we are particularly grateful to the following: the Scouts for battling the weather to erect their marquee which provided much needed shelter from the rain, and for their fabulous BBQ and litter picking duties; the local clubs who provided stalls and activities; the volunteers who manned the gates, sold raffle tickets, organised the site plan, worked like machines putting up gazebos, taking down gazebos and even making a plumbed-in sink for the WI tea tent! To the wonderful "Master of Ceremonies"; the WI for their fabulous cream teas and cakes; the school Caretaker was invaluable in her support, as was the school in allowing us to use their grounds. We are also grateful to the Parish Council for providing funding for the Fete, and The Cresset for sponsoring the printing for the event. And finally, a big thank you to the local community for coming along (over 650 of you) and supporting this village event, and for showing what a lovely community we have.

And so, to the future.....If you had asked the committee at 11 o'clock on Saturday morning whether we would do this again next year, the answer would have been a definite NO, however by 6 o'clock that evening we were all saying let's do it again! So please do let us know if you have any ideas for next year as we plan to build on the successes of the last two years, and will endeavour to make sure our village has a yearly Fete.

*Bottisham Village Fete Committee*

*Emma Jerman, Morven Langdon, Heather Lay, Jenn White, Jane Morris*  
*bottishamvillagefete@hotmail.com*



## Contents

Services in the Anglesey Benefice - July/Aug. 2019.....	4	Bottisham Community Library Association.....	23
Help us to recycle more!.....	5	District Councillors' Report.....	25
Letter to the Editor.....	5	East Anglian Air Ambulance .....	29
Cambridge, Past, Present & Future.....	9 & 11	WEA.....	29
Anglesey Branch Mothers' Union Report.....	11	Bottisham WI.....	31
Parish Notes .....	13 & 15	Cambridgeshire Fire & Rescue Service.....	35
Planning Notes .....	15	Bottisham & District Gardening Club.....	45
Public Transport Matters.....	17	Thoughts of a Sports Nut .....	47 & 49
1st Bottisham Scout Group.....	19	Sales, Wants and Swaps.....	49
Bottisham Sports Centre .....	21	Jolley Old World.....	53 & 55
News from Bottisham Medical Practice Patients' Group .....	23		

## Letter to the Editor

### Dear Peter,

At the Bottisham APM a gentleman who lives near the school challenged (quite rightly) me with regard to the buses leaving their engines running outside the schools. I spoke to the relevant committee Chairman and as a result this letter has gone to our school transport bus companies. I thought this might be of interest to the village.

*Kind regards - Mathew Shuter, County Councillor*

### Dear Operator

Re. Vehicle Emissions - at School / Day Centre Sites

Following on from recent concerns raised in the National Press around high levels of vehicle emission pollution which is affecting the health of the public particularly around young people, the council has recognised that it must play its part in reducing this risk where possible. Therefore as a council we wish to ensure that our contracted transport provision is setting the best possible example regarding vehicle's operating in and around our Schools and Day centre facilities.

We are therefore requesting that when contracted transport vehicles are stationary on or near a School/Day centre site the vehicle engine is SWITCHED OFF, however short any wait may be. This is aimed to reducing emission levels at the point Children/ Service Users are boarding or alighting vehicles.

We thank you for your support in reducing emitted emissions levels around these facilities.

## ***Services in the Anglesey Benefice - July/Aug. 2019***

<b>Wed July 3rd</b>	<b>8pm</b>	<b>“C by C” (Short candlelit meditative service)</b> at Bottisham
<b>Sun July 7th</b>	<b>8am</b>	<b>Holy Communion (BCP)</b> at Swaffham Bulbeck
	<b>9.30am</b>	<b>Morning Service</b> at Swaffham Bulbeck
	<b>9.30am</b>	<b>Village Worship</b> in Quy Village Hall
	<b>11am</b>	<b>Holy Communion</b> at Bottisham
<b>Sun July 14th</b>	<b>9.30am</b>	<b>Holy Communion</b> at Swaffham Bulbeck
	<b>11am</b>	<b>Family Holy Communion</b> at Lode
<b>Sun July 21st</b>	<b>8am</b>	<b>Holy Communion (BCP)</b> at Bottisham
	<b>9.30am</b>	<b>Holy Communion</b> at Quy
	<b>11am</b>	<b>Family Service</b> at Swaffham Prior
<b>Sun July 28th</b>	<b>9.30am</b>	<b>Children’s Church</b> at Lode
	<b>11am</b>	<b>Holy Communion</b> at Swaffham Prior
<b>Sun August 4th</b>	<b>8am</b>	<b>Holy Communion (BCP)</b> at Swaffham Bulbeck
	<b>9.30am</b>	<b>Morning Service</b> at Swaffham Bulbeck
	<b>9.30am</b>	<b>Village Worship</b> in Quy Village Hall
	<b>11am</b>	<b>Holy Communion</b> at Bottisham
<b>Wed August 7th</b>	<b>8pm</b>	<b>“C by C” (Short candlelit meditative service)</b> at Bottisham
<b>Sun August 11th</b>	<b>9.30am</b>	<b>Holy Communion</b> at Swaffham Bulbeck
	<b>11am</b>	<b>Family Holy Communion</b> at Lode
<b>Sun August 18th</b>	<b>8am</b>	<b>Holy Communion (BCP)</b> at Bottisham
	<b>9.3 am</b>	<b>Holy Communion</b> at Quy
	<b>11am</b>	<b>Matins</b> at Swaffham Prior
<b>Sun August 25th</b>	<b>9.30am</b>	<b>Children’s Church</b> at Lode
	<b>11am</b>	<b>Holy Communion</b> at Swaffham Prior

### **ST JAMES’ CHURCH LODE**

## **ST JAMES’ POP-UP CAFÉ**

Church Café will be open from 3pm-5pm on the following Sundays

**30th June, 28th July, 18th August, 22nd September**

Why not pop in for a chat, tea & cake

or to play a game of scrabble, dominoes or cards.

## **The Cantilena Singers**

A CONCERT OF MUSIC FOR A SUMMER AFTERNOON

**with Chris Hill on the Flute**

**Saturday 6th July at 4 pm**

Refreshments provided - Admission fee payable on the door

For more details please contact Coral Hatley 01223 811457



Unfortunately Rev. Alan is recovering from an operation at the moment. He will be continuing his series on Love from 1 Corinthians 13 in the next issue. In the meantime here is one of my favourite little poems on the subject – it is called ‘Outwitted’ and it’s by Edwin Markham (1852-1940):

He drew a circle that shut me out—  
Heretic, rebel, a thing to flout.  
But Love and I had the wit to win:  
We drew a circle that took him in!

That is our aim at RENEW Church, to draw a circle that takes people in. Please come, we’d love to see you! The times of our Sunday worship services are shown below.

*Peter Wells.*

### **RENEW Services for July and August 2019**

Morning worship at Bottisham Primary School will continue on Sundays as usual through July and August. Croissants and drinks are available from 10.10 am.

The services begin at 10.30 am

Everyone is welcome.

We have activity groups for children and young people

For more information about any of the activities of RENEW Church please contact:

Rev. Alan Brand on C.812558. Email: [alan.brand@renewchurch.org.uk](mailto:alan.brand@renewchurch.org.uk)

Or visit our website at [www.renewchurch.org.uk](http://www.renewchurch.org.uk)

## ***Letter to the Editor***

I should like to thank whoever was responsible, either group or individual who planted the poppy and other wildflower seeds in several places along the A1303. The flowers were much appreciated by one and all.

At a recent Meeting Point meeting (Wednesday mornings in the Poppy Room) we had a visit from a member of the Care Network team based in Sawston who was on a fact-finding exercise to explore the facilities available to all Bottisham residents, not necessarily the older community. The 3 volunteers on duty were able to give her a long list and surprised ourselves of what is available. She commented that we compared most favourably with other villages. She will be coming again shortly to familiarise herself with the Red to Green café and plant shop and will also go into the public library also run by volunteers. The opportunities are there – please please use them. There is no need to feel lonely.

I started this in a good mood. What a shame that the grasscutters cut the beautiful blooms with many more flowers to come down before it was needed. I question whether they needed to be so severe. I am glad we went on the previous weekend to photograph them.

*Sylvia Overton*



# The Carpenters Arms

Brew Pub & Restaurant

Great Wilbraham



**Special Lunch Menu Wed - Sat**  
**2 Courses £13.95    Main only £9.95**

**Summer evening promotions still running:**

**Wednesday - Burger BOGOF Night - Buy one get one free only £9.95**

**Thursday - Fish & Chip Night £7.95, 2 for £15.00**

**Friday - 2 Main Courses + Bottle of House wine £30.00**

For more information, full menus, prices and opening times :

Website: **[www.carpentersarmsgastropub.co.uk](http://www.carpentersarmsgastropub.co.uk)** ☎ 01223 882093

The Carpenters Arms, 10 High Street, Great Wilbraham, CB21 5JD

**LockSwift**

## SAME DAY SECURITY SERVICES

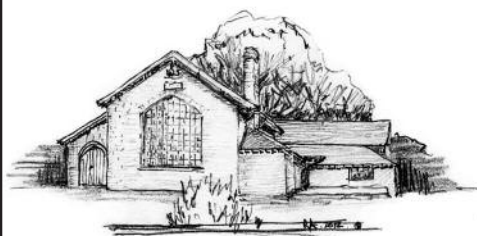
**OUR SERVICES**

- Locksmiths
- Key Cutting available
- Wireless Alarm Installation
- Available 24/7
- No Call out charges
- Free estimates

Call **Peter Martin** 07989 954682 | 01223 967407

Email : [peter.martin@lockswift.co.uk](mailto:peter.martin@lockswift.co.uk)  
Web : [www.lockswift.co.uk/locksmithsincambridge](http://www.lockswift.co.uk/locksmithsincambridge)





## *Ristorante Il Piccolo Mondo*

Telephone 01223 811434 for reservations

85 High Street Bottisham Cambridge CB25 9BA

### *OPENING TIMES*

*WEDNESDAYS / THURSDAYS / FRIDAYS / SATURDAYS*

*12.00- 2.30pm & 6.30- 9.30pm*

*SUNDAYS / MONDAYS / TUESDAYS - CLOSED*



### **Welcome To Classic Spice** **FINEST INDIAN RESTAURANT**

Classic Spice Restaurant and Takeaway is a fully licensed Restaurant and Takeaway located in the heart of Bottisham. Here at Classic Spice we serve a wide range of quality meals, which are freshly prepared using only the best and finest ingredients by our experienced Chefs. You can enjoy our food by Dining in our Restaurant or in the comfort of your home via our Takeaway and Delivery service. We're open 7 days a week.

#### Location

4 High Street  
Bottisham  
Cambridge  
CB25 9DQ

Special Offer **10%** off Discount on collection order over £20

Order Online at

**[WWW.CLASSICSPICE.CO.UK](http://WWW.CLASSICSPICE.CO.UK)**

Mon - Sun

**5:30pm - 10:30pm**

Call Now on

**01223 813 599**

Free Home Delivery

**For Bottisham only**

# Window Cleaning & Gutter Cleaning

Working in and around  
Lode, Bottisham, Stow cum Quy & Cambridge

07942 780601

[www.cambridgewindowcleaning.com](http://www.cambridgewindowcleaning.com)

Ladies Only

## Facials & Massages

"Swap stress & worries for happy,  
healthy skin, body & mind!"

**Luxurious Pampering  
Treatments**  
at affordable prices

*~Friendly & caring, excellent customer service guaranteed~*

**MIHOKO**  
Beauty Therapy

\*\*\*\*\*

For Special Offers, please visit:

[www.mihokobeautytherapy.com](http://www.mihokobeautytherapy.com)

Church Road, Stow cum Quy, Cambridge

Tel: **07711 021165**

VTCT Level 3 Qualifications  
Fully insured & Full member of ABT



An accountancy service  
based in Burwell that  
covers everything  
your business needs

For more details contact Paul on

 [info@cb25accounting.co.uk](mailto:info@cb25accounting.co.uk)

 07803 782423  [cb25accounting](https://www.facebook.com/cb25accounting)

# **Cambridge, Past, Present & Future**

*- A colourful month of activities*



- Wandlebury Adventures: Fire Making (for unaccompanied 8-12 year old children) Mon 1 July: 6pm to 8pm** An exciting opportunity for 8-12 year olds to learn how to start a fire and put their skills to the test! £75 for 6 or £15 each individual session. Based in the Stable Rooms at Wandlebury, CB22 3AE. Booking in advance essential by email enquiries@cambridgeppf.org or telephone 01223 243830
- In Situ: Theatre at The Leper Chapel: Julius Caesar by William Shakespeare Thurs 4 July – Sat 6 July: 8pm** Join In Situ: theatre for Shakespeare's history play and tragedy of political assassination and civil war. Tickets £15 available in advance at [www.insitutheatre.co.uk](http://www.insitutheatre.co.uk) and at the venue from 7.30pm. The Leper Chapel, CB5 8JJ – opposite Cambridge United. No parking on site.
- Coton Countryside Walk: Coton Reserve–Madingley Rise–American Cemetery Saturday 6 July: 10am to 3pm** Join us for a sociable 7.5 mile long countryside walk around picturesque Coton village and its beautiful surroundings. No need to book. Free, donations are appreciated. Meeting point is the Martin Car Park at Coton Reserve, Grantchester Road, Coton.
- Hinxton Watermill Open Day, Sunday 7 July: 2.30pm to 5.30pm** See the mill in action, riverside walk and 'Where's Ratty' game for children. NB: CambridgePPF members can visit for free. For non-members entry is £3 for adults, £1 for children. No need to book. Mill Lane, Hinxton CB10 1RD
- Wandlebury Adventures: Den Building and knots (for unaccompanied 8-12 year olds), Mon 8 July: 6pm to 8pm** Have a blast building a construction using knots! £15 each individual session. Based in the Stable Rooms at Wandlebury, CB22 3AE. Booking in advance essential by email enquiries@cambridgeppf.org or telephone 01223 243830
- Wild Flowers of Wandlebury in Summer, Tue 9 July: 10am to 12pm** Learn more about wild flowers found at Wandlebury. Wandlebury Country Park, CB22 3AE
- In Situ: Theatre at The Leper Chapel: Hamlet by William Shakespeare, Sat 13 July and Sun 14 July: 8pm** Enjoy Hamlet, as never seen before! Tickets £15 available in advance at [www.insitutheatre.co.uk](http://www.insitutheatre.co.uk) and at the venue from 7.30pm. The Leper Chapel, CB5 8JJ – opposite Cambridge United. No parking on site.
- Moths at Wandlebury, Fri 19 July: 7.30pm-late or Sat 20 July: 6am to 9am** Come and learn about hundreds of species of common and rarer moths, Wandlebury Country Park, CB22 3AE
- In Situ: Theatre at The Leper Chapel: The Demon Lover by Elizabeth Bowen, Sat 20 July: 8pm** Storytelling and drama by in-situ, featuring The Demon Lover. Tickets £15 available in advance at [www.insitutheatre.co.uk](http://www.insitutheatre.co.uk) and at the venue from 7.30pm. The Leper Chapel, CB5 8JJ – opposite Cambridge United.
- In Situ: Theatre at The Leper Chapel: Tales of Mystery and Imagination, Sun 21 July: 8pm** The "uncanny boundary between life and death" feature in two of the best of Edgar Allan Poe's famous collection of short stories Tickets £15 available in advance at [www.insitutheatre.co.uk](http://www.insitutheatre.co.uk) and at the venue from 7.30pm. The Leper Chapel, CB5 8JJ – opposite Cambridge United. No parking on site.
- In Situ: Theatre at The Leper Chapel: Ghost Stories, Sat 27 July: 8pm Bourn Windmill Open Day and Teas Sunday 28 July: 2pm to 4pm** Guided tours, have a go at turning the mill and teas/cakes. No need to book. Off Caxton Road, Bourn CB23 2SU.

*Continued on page 11*

# ANGLIA TREE CARE

**LARGE ENOUGH TO COPE • SMALL ENOUGH TO CARE**

80% OF OUR WORK IS VIA RECOMMENDATIONS  
TREE SURGERY & FELLING • HEDGE MAINTENANCE  
STUMP GRINDING • FULLY QUALIFIED  
FULLY INSURED • 24/7 SERVICE  
All work carried out to BS 3998

**Free Estimates Given within 7 days**

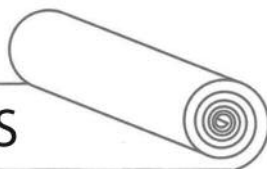


Tel. 01223 424454 • [INFO@ANGLIATREECARE.CO.UK](mailto:INFO@ANGLIATREECARE.CO.UK)

**M E M B E R**  
Guild of Master Craftsmen

# PETER FISHER

## CARPETS - WOODS - VINYL



A wide range of floorings supplied and fitted.  
Please call for a free estimate and select in your home.

Tel: (Bottisham) **01223 811321**  
Mobile: **07879 494 685**

*Great service for*  
**30** *years*



*Continued from page 9*

**Holiday Bushcraft (5-12 year olds) 29 July – 30 July, 05 Aug - 07 Aug, 12 Aug - 14 Aug, 19 Aug - 21 Aug, 27 Aug – 28 Aug 3-4 Sept 2019: 8.30am to 4pm** Holiday Bushcraft at Wandlebury is designed for children ages 5-12 and is run by experienced, qualified teachers from the outdoor learning experience group, Wild Thyme & Embers. All basic bushcraft techniques suitable for this age range will be taught. Booking essential. Further information visit [wildthymeandembers.co.uk](http://wildthymeandembers.co.uk). Wandlebury Country Park, CB22 3AE.

**Directions:** Wandlebury Country Park is on the A1307, 2.5km south of the Addenbrooke's roundabout. CB22 3AE. Parking is available on site and costs £3 per vehicle, members free.

**For more information:** email [bookings@cambridgeppf.org](mailto:bookings@cambridgeppf.org), call 01223 243830 extension 207 or visit [www.cambridgeppf.org/whats-on](http://www.cambridgeppf.org/whats-on)

## *Anglesey Branch Mothers' Union Report*

Our guest speaker in May was Rev'd Professor Gina Radford. She lead us through a fun question and answer session on hymns and their writers. Many people enjoy singing hymns whether it is traditional, gospel or modern. They have very personal meanings and memories for each individual, often marking important events during our lives. However, we rarely look at when and by whom they were written. This was very enlightening, and enhanced our knowledge on the writers' background.

The oldest hymn ever written in 200AD was by Clement of Alexandria 150-215. He was a Christian theologian who taught at the Catechetical School of Alexandria. Probably the first hymn written in modern English which begins "Glory to Thee, my God, this night, /For all the blessings of the light; / Keep me, O keep me, King of kings, / Beneath Thine own almighty wings" was given to us by Thomas Ken (1637-1711). He was an Anglican Bishop, hymn writer and Royal Chaplain to Charles II of England.

Charles Wesley is said to have written 6,500 hymns. These include the well-loved hymns "Love Divine, all loves excelling", "Rejoice the Lord is King" and "Jesu, Lover of my soul".

American hymn writer Fanny Crosby 1820 -1915 wrote more than 9,000 hymns. Fanny was blind and only had sight for the first six weeks of her life. Two of her best known hymns are "Blessed Assurance" and "To God be the Glory".

Henry Francis Lyte 1793-1847 wrote "Abide with me" in 1847. This was set to music whilst he lay dying. Today the hymn is usually sung to the more modern tune 'Eventide' written by William Henry Monk.

In 1855, while staying in Ontario, Joseph M Scriven received news from Ireland of his mother being terribly ill. He wrote a poem to comfort his mother called "Pray Without Ceasing". It was later set to music and renamed becoming the hymn "What a Friend we have in Jesus".

Famous poet John Milton 1608-74 is the youngest hymn writer. He wrote "Let us with a gladsome mind" at the age of 15 as a paraphrase to Psalm 136.

At the end of her talk the branch presented Gina with a card and small keepsake to wish her well on her move to a new parish in Devon.

Our meetings usually take place on the third Thursday of the month in Lode Chapel at 2.30pm. In July our speaker will be a volunteer of the Service by Emergency Response Volunteers (SERV) Suffolk & Cambridgeshire. (A charity organisation transporting blood, blood products, breast milk, patient samples 24 hours a day, 365 days a year). You are most welcome to come and join us.

# SG LAW

Plumbing & Heating Services

Cambridge based plumbing,  
heating and specialists in  
bathroom installations

## Services include

- Plumbing
- Heating & Servicing
- Bathrooms
- Commercial

T: 01223 812280 M: 07747552232 E: [hello@sglawplumbing.co.uk](mailto:hello@sglawplumbing.co.uk) [www.sglawplumbing.co.uk](http://www.sglawplumbing.co.uk)

## Saffron Salt Supplies

### Water Softener Salt

Salt tablets in 25 or 10kg bags

Block salt in 2x4kg packs

### Dishwasher Salt

Granules in 10kg bags

### De-Icing Salt

White crystal in 25kg bags

delivery **FREE** to your door  
visit our website for full listing

[www.saffronsalt.co.uk](http://www.saffronsalt.co.uk)

Place your order by phone

**07980 581815** or email

[info@saffronsalt.co.uk](mailto:info@saffronsalt.co.uk)



## N.C.S.

**BRUSH ELECTRIC SWEEP  
ALL CHIMNEYS SWEPT**

- BIRDS NESTS REMOVED
- OIL & GAS BOILERS
- SOLID FUEL, STOVES FITTED
- SMOKE PRESSURE TESTING
- INSECT MESH, POTS, COWLS
- FLUE LINERS SUPPLIED & FITTED
- BIRD GUARDS & TERMINAL FITTED
- GUTTERS CLEANED & REPAIRED
- GENERAL PLUMBING WORK

**FOR FREE QUOTE CALL  
07824 727277 or 01638 662760**

EMAIL  
[NCS.NEWMARKET@YAHOO.CO.UK](mailto:NCS.NEWMARKET@YAHOO.CO.UK)

WEBSITE  
[www.ncsnewmarket.co.uk](http://www.ncsnewmarket.co.uk)

\*Send text or e-mail for 10% discount  
Answers within an hour. • Waiting time approx. 1-2 weeks

**VERY CLEAN • Public liability insurance  
- Competitive rates -**

The Council have been liaising with the village storekeepers, looking for solutions to the car parking problems around the 'triangle.' Our thanks must now go to them for their work in upgrading the car park (provided for the tenants and staff) at the rear of the shops, to encourage parking there. This has been neglected and overgrown for a long time, with the owner unwilling to invest in the site. Bill Sumner of Bottisham Village Stores liaised with other shop owners and together they have cleared a large area of overgrown brush. The drainage will also be improved to prevent the heavy flooding which inhibits the car park from being used. The road surface will be repaired and the car park lit at night to improve safety. The initial works have already resulted in many more vehicles using the area, so freeing up space for customers at the front. We had discussed installing an extra lay-by around the 'triangle', but are monitoring the situation in the hope that this will not now be needed.

At our recent Annual Parish Meeting, a parishioner complained about buses at the Village College leaving their engines running, resulting in heightened levels of emission pollution. County Councillor Shuter took this on board and spoke to the Transport Manager at the County Council. He agreed that they should be doing more to reduce vehicle emissions around schools and daycentres and has sent a letter to all bus operators in Cambridgeshire. This requests that drivers, when stationary on site, turn off their engines, no matter how short the stay. County Councillor Shuter urged any resident who felt this was not being adhered to, to take the number plate and time and report this to the County Council.

The bus shelter for the new A1303 installation (towards Cambridge) has now been ordered and should be almost ready for installation in the next couple of weeks. Disappointingly, whilst this is going ahead, the bus shelter on the other side of the A1303 has been vandalised. Not content with kicking out the Perspex panels, the vandals have bent or torn out the frames that the Perspex fits into and broken the holder for the timetables. This will now result in an insurance claim. A waste of money and my time! Please report to the police any suspicious behaviour you may see in the village.

There have been problems with the grass cutting as a new 'team' get used to the area they have to cut. Hopefully these have been ironed out now, but please let me know if somewhere has been missed.

Recently Lucy Frazer MP wrote to us concerning a 'bus strategy'. She is consulting with all parish councils, asking for their views on what improvements to the service they would like to see. This was discussed with residents who came to the Annual Parish Meeting. We replied to say we wanted an evening and Sunday service and also some consideration as to how students can get to sixth form colleges. Another suggestion was a service that ran to Cambridge North railway station. Our District Councillors have been liaising with other villages in the ward serviced by the no. 11 bus, and are hoping to get representatives from them together to discuss the matter.

Lastly, congratulations and thanks must go to the Committee who organised an excellent village fete, with the weather clearing up to allow for a good turnout. The earlier wind/rain

*Continued on page 15*

# M&P

## LANDSCAPE AND DESIGN

Patios, Block Paving, Fencing,  
Turving and all Gardening needs.

References available on request.

Local tradesman • Free estimates

PLEASE CALL

**01223 811144**

MOB **07837 358550**

## N & G Marsh of Burwell Engineers

For all your metalwork requirements

- ❖ Welding Services
- ❖ Handrails
- ❖ Security Bars
- ❖ Gates
- ❖ Mower Repairs
- ❖ Tow bars
- ❖ Metal Railings
- ❖ RSJs Supplies

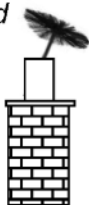
Services to the Building Industry  
Tractors & Agricultural Machinery  
Repaired

Tel; 01638 741354 or 741 926

**R. BRISTLEY** Est. 1974  
9 Collings. Place Newmarket CB8 0EX

## BRUSH ELECTRIC SWEEP

- All Chimneys swept
- Solid Fuel, Oil and Gas
- Cows, Nets and Pots fitted
- Carpets Cleaned
- Stoves Serviced
- Competitive Prices
- Very Clean
- Public Liability Insurance



also Classic Wedding Car Hire  
White Citroen DS21

Tel: 01638 662439  
[www.rbristley.co.uk](http://www.rbristley.co.uk)

# JCM

*Property Maintenance  
Ltd*

**For the best in  
Renovation,  
Redecoration  
& Repair**

Contact Joel Clarke-Morgan  
On 07885 586229  
or e-mail; [JCM@weyr19.co.uk](mailto:JCM@weyr19.co.uk)

[www.jcmpropertymaintenance.co.uk](http://www.jcmpropertymaintenance.co.uk)  
47 Edinburgh Rd, Newmarket CB8 0QE



was a challenge setting up. Parish Council spent a long morning erecting, then having our gazebo destroyed by the elements. Fortunately we were offered shelter for our stall elsewhere and had a good afternoon engaging with residents about any concerns. A second objective was to attract new parish councillors – we are still short in numbers by 5!! Please see the advertisement in the Cresset and if you think you would like to get involved, please contact myself or our Chairman Jon Ogborn. Our next meeting is Monday 1st July in the Poppy Room at the Community Sports and Social Club, 7.30pm. If you would like to see what goes on at a meeting, you are welcome to attend. Please note we do not meet in August. Enjoy the summer everyone!

*Claire Fullwood - Parish Clerk - [clerk@bottishampc.co.uk](mailto:clerk@bottishampc.co.uk)*

## *Planning Notes*

19/00697/FUL, Post Office, 12 High Street. Provision of a link structure to enable covered areas from retail unit to rear store area. NEW APPLICATION

19/00442/FUL 10 Maple Close. Proposed first floor side extension APPROVED BY ECDC

19/00351/FUL The Stone Yard, Whitelands Farm, Newmarket Road. Change of use of two related buildings to Building 1 to B2 workshop and Building 2 to showroom/office. APPLICATION APPROVED BY ECDC

### **BOTTISHAM PARISH COUNCIL**

## *We Can All Make A Difference Together*

Do you want to make a positive contribution to the place where you live and help it grow sustainably for everyone? Then why not become a PARISH COUNCILLOR?

The Parish Council oversees the maintenance and planning of our local environment. It is also the main mouthpiece for us to influence the policies of our District and County Councils that impact on our village. It really “makes a difference”.

#### **Requirements:**

- You must be over 21
- Lived or have worked within 3 miles of Bottisham for the last 12 months

#### **What we need in new Councillors:**

- Young and older people with energy and enthusiasm to give to our village
- Those with varied skills, experience and views
- Interested in working as a team

**Why not come along to a Council meeting and listen in for a taster? The Council meets first Monday of the month at the “Bottisham Community Sports and Social Club” at 7.30pm (no meeting in August).**

**IF YOU ARE INTERESTED CONTACT THE PARISH CLERK ON  
[clerk@bottishampc.co.uk](mailto:clerk@bottishampc.co.uk) or telephone 07914 219732. [www.bottishampc.co.uk](http://www.bottishampc.co.uk)**

## ANGLIA GAS & ELECTRICAL SERVICES



Sales - Service - Repairs - Installation

- Gas Boiler/Central Heating Systems
- Domestic Gas / Dual Fuel Appliances
- Nat. Gas/LPG Landlord safety checks
- Electrical /Portable appliance Testing
- Electrical and Plumbing Maintenance

Contact: Jim Perry  
on  
01638 741432 or 07768 856456

## ALAN R. COOPER

BSc(Hons)Pod. M.Ch.S

**Podiatrist/Chiropodist • Newmarket**  
(Est. RC Cooper SR Ch.1934)

Routine Chiropody & Home Visits  
Ingrown Toenails by Local Analgesia  
& Footwarts by Cryosurgery (freezing)  
Biomechanical Assessment + Orthosis  
Instruments sterilised by Autoclave

**TELEPHONE 01638 662840**  
**4 Market St., Newmarket CB8 8EE**

## GERMAN LANGUAGE COACHING

Native German Speaker  
Qualified Teacher  
Coaching to GCSE level

Karin Hulme 812669

# WANTED

**POLITE, LOCAL BUSINESS EST. 25 YEARS  
IS LOOKING TO BUY THE FOLLOWING:**

- Furniture • Quality jewellery and Costume jewellery • Collectables • China, glass, ceramics • Old toys • Silver, silver plate, old copper & brass
- Militaria - uniforms, medals, weapons • Old tools
- Old garden ornaments • Anything considered

Polite & confidential service. Good prices paid.  
Please call: Steve Durrant 01638 507037 / 07740 591194

## *Public Transport Matters*

My apologies to anyone who was put off travelling in London by my declaring in my last article that the cost of a single bus ticket in London was £150 rather than the accurate £1.50! As I write, a date for the commencement of the works for the A1303 bus service 12 bus stop has still not been confirmed. The Highways dept. have received a cost for the installation but that had to be agreed and the works ordered. Apparently the residents of Rotherham now have a new bus shelter at a cost of £6000 at a site where no buses have run since March!

Plans to cut congestion in Cambridge city are often in the news. Possible new travel hubs and potential routes for a new mass public transport link from the A1307 would mean that thousands could access the city without driving. This is being planned by the Greater Cambridge Partnership (GCP) joint assembly. A public consultation on links from the A1307 to the city could begin in September. It is to support the thousands of extra jobs and homes planned for Greater Cambridge. There has been a public consultation on ways to cut congestion, improve air quality and double public transport provisions. More than 5000 people took part. More than 70 per cent of people preferred a new travel hub over a multi storey car park on the existing Trumpington Park and Ride site. It would have more parking spaces and secure and sheltered cycling spaces with lockers to encourage more people to cycle, walk or use public transport to get to the city. People do want to have reduced traffic and better public transport as options to using their cars, particularly at peak times, says Councillor Lewis Herbert. Rail commuters will also benefit from 2,000 extra seats at peak time with a new Govia Thameslink railway timetable which started in May. The frequency of the Cambridge-Brighton rail link Monday to Friday will be doubled with two trains running per hour each way. The chief executive of GTR says the service has been well received. There will also be extra weekend services including new and reinstated trains. He says that leisure travellers will love the new service too. There are now 31 additional services on weekdays, 13 of which are at peak times. Full details are available on the National Rail website regarding a replacement bus service between Watton at Stone and Stevenage for maintenance and delivery of a fifth platform at Stevenage.

I have always enjoyed travelling by train through Europe and have never flown. Such changing landscapes to see from the comfort of your seat. The German railways online website gives train times for almost anywhere in Europe – bahn.de. Each train operator has its own ticketing system but thetrainline.com connects to several rail companies. Several specialist companies offer rail holidays, short breaks and tours by train. Railbookers 020 3780 2222 – railbookers.co.uk. Planet Rail – 01347 825292 – planetrail.co. For escorted tours there are Great Rail Journeys - 01904 894261 – greatrail.co.uk or Rail Discoveries – 01904 734939 – raildiscoveries.com. You can obtain an interrail pass which gives you the freedom to explore Europe on trains run by most of Europe's national operators. Tickets by phone are available through Trains Europe -0871 7007722 – trainseurope.co.uk and International Rail – 0871 2310790 – internationalrail.com.

**info: 03457 48 49 50    Traveline: 0871 200 22 33**

*Happy travelling - Paddy James*



# Saplings

## Preschool Playgroup

It has been a busy term for us at Saplings. We have recently had an Ofsted inspection, and are thrilled with the outcome of being rated "Good".

Lunch club is proving popular, and it is a lovely social time for the children to eat together.

We have improved our outdoor play space. Our mud kitchen and sand pit have had a revamp, and we now have a den building area. Thank you to the Parish Council for a grant which we will use to continue to improve the outdoor play area.

We recently asked the village to respond to a questionnaire about what you need from Saplings. Many thanks to everyone who took the time to give us feedback. From this, we have extended our opening hours. From September we will be open longer on Mondays and Tuesdays, 9am-3pm.

If you are interested in sessions in September, please email [enquiries@saplingsbottisham.co.uk](mailto:enquiries@saplingsbottisham.co.uk) or phone 01223 813226. Even better pop in and come for a play to see what we are offering.

*Saplings Preschool Committee*



## Stitchshed Sewing

(Formerly Little Stitches)

### Repairs and Alterations

I am based locally and can help you with clothing alterations & repairs, curtains, blinds and cushions

### Sewing Classes

If you wish to learn to sew, then please call for a chat.

Classes at the Stitchshed or private home tuition available for:

Dressmaking  
Patchwork and Quilting  
General craft sewing

Getting to know your sewing machine!

**Tel:** 01638 745160

**Mobile:** 07449 954590

**Email:** [stitchshed@gmail.com](mailto:stitchshed@gmail.com)

**Web:** [www.stitchshed.blogspot.com](http://www.stitchshed.blogspot.com)

## Little legs of Lode Montessori Nursery



Passage Hall  
Lode



We have spaces for children aged from 2 years onwards each morning in term time.

The Montessori method allows children the freedom to be creative, to learn and to develop at their own pace in a calm environment.

Please contact Sharon for a prospectus or to arrange a visit.

[sharonmaskall1@gmail.com](mailto:sharonmaskall1@gmail.com)

Tel: 07572 121463



We often tell you what the 1st Bottisham Scout Group get up to locally, but Scouting holds all kinds of activities at District level (Newmarket in the case of 1st Bottisham), County wide, Nationally and Internationally. For example, thousands of Scouts from across the world, including a strong UK contingent, will be heading to the '4 yearly' World Jamboree, held this summer in West Virginia, USA. 1st Bottisham have recently been involved in one National event – The Scout National Archery Competition 2019. Philip Watson, one of our Scout Leaders tells us about the experience:

“What do you get when 300+ Cubs, Scouts, Explorers and Leaders from all over the UK converge on Phasels Wood Scout Centre near St. Albans for a weekend in early May?

Under normal circumstances it would point toward a lot of fun and probably a campfire or two, but when you add in 300+ bows and arrows you get the UK's largest archery competition! In this case the 14th Scout National Archery Tournament and 1st Bottisham have been taking part since 2009!

With nine archery ranges it is a logistical nightmare but the organisers, Scout Leaders from Hampshire Scout Archery Club take it all in their stride. Those ranges encompass target archery (what most people think of as archery, with targets lined up and archers all shooting together), field archery (simulated hunting in a woodland setting with targets at unknown distances and random (and challenging!) locations and clout archery (simulated warfare!) with archers trying to get their arrows as close to the clout (cloth) as possible. No easy task when the clout is 100yds away and is just a flag set in the ground!

Clout is always a huge challenge as everyone shoots supplied equipment rather than their own so there are always plenty of 'nowt for clout' badges awarded to those who despite best efforts score zero and can claim their special badge.

Everyone's favourite is field. The Scouter responsible for the courses each year takes great pride in making them different, challenging but also fun for each age group. 1st Bottisham, true to the Scout Motto, did their best and were rewarded with a great medal haul:-

Explorer YL, Jasper (Gold in the U18 Clout and Gold in the U18 40yd Compound)

Explorer YL, Flo (Silver in the U18 40yd recurve)

Mary Watson, Troup Asst. (Gold in the O18 40yd Longbow)

Kate Watts, Troup Asst. (Silver in the O18 20yd recurve)

Paula Langton, OH (Silver in the O18 40yd recurve)

We also missed out (by just 8 points) on a Bronze for Scarlet in the U14 20yd recurve.”

Well done to everyone who took part and a big thank you to the leaders who once again gave up their time. Our fundraising continues, this time at the wonderful Bottisham village fete, although I'm not sure we used the term wonderful on the Saturday morning, when trying to erect the Scout marquee in the pouring rain in 40mph gusts of wind! But what a fabulous afternoon, with lots of people turning out and having fun, and lots of charities and groups like ourselves being seen - and making some money to fill the coffers! A huge thank you to the organisers; you know who you are!

As always please drop me a line about anything Scouting related and if the piece on Archery has interested you then why not give it a try – Philip runs Peacock Archers from Bottisham [www.peacock-archery.co.uk](http://www.peacock-archery.co.uk) for all ages and abilities, including complete novices (see ad in the magazine). Happy summer!

*Linda Jones Chair, 1st Bottisham Exec committee [lindakingleouis@aol.com](mailto:lindakingleouis@aol.com)*

# SOMETHING TO SUIT EVERYONE

Air conditioned fitness suite including:

- Zumba,
- Spin,
- Pilates
- Kettlebells and much more!
- 25 metre, 4 lane swimming pool
- even birthday parties!



For availability and bookings  
simply contact 01223 811121 or  
email [sportcentre@bottishamvc.org](mailto:sportcentre@bottishamvc.org)



**Bottisham Village College**

Sports Centre

MEMBERSHIP ONLY £23.50 Including Swim, GYM, Badminton, Tennis & Fitness Classes

## BOTTISHAM SPORTS CENTRE GREAT VALUE

### SWIM LESSONS

START  
AT **£20** PER  
MONTH



[facebook.com/BottishamSportsCentre](https://facebook.com/BottishamSportsCentre)

For more information call **01223 811121**  
or e-mail: [sportcentre@bottishamvc.org](mailto:sportcentre@bottishamvc.org)



**Bottisham**  
Sports Centre

# Bottisham Sports Centre

We are extremely excited to share with you our refurbishment plans for the Sports Centre. During the summer, the swimming pool will be re-lined and the changing rooms a much-needed makeover. In addition, the fitness suite will also undergo some changes with new gym equipment and set up. The new gym equipment will include 3 treadmills, 2 bikes, 2 cross trainers, 'smith' machine and full set of dumbbells. In addition, we will be having new upholstery on all our resistance machines.


This is a significant project and therefore the swimming pool and changing rooms need to close, to allow the work to take place. The last day the swimming pool will be open is Thursday 27 June, closing from Friday 28 June to Sunday 8 September. If it is possible to open the swimming pool facilities earlier, we will inform you.

Please note: all other aspects of the Bottisham Sports Centre membership will continue to be available as normal; Badminton; Tennis; Fitness Suite and Fitness Classes.

*Oliver Swan-Taylor, Centre Manager 01223 811121*

**Copy deadline for next issue is 14 August.**

*Please send material to the editor at [BottishamCresset@gmail.com](mailto:BottishamCresset@gmail.com)*



## Cambs FA Business League Cup

The Cambs FA Business League Cup is fast, fun, accessible football. This is a fantastic opportunity for people to get fit and healthy, promote wellbeing in the workplace and play the beautiful game.

- Weekly fixtures
- FA Full-Time fixture and results recording
- League and cup rounds
- Delivered by a Cambs FA Co-Ordinator
- FA Qualified referees

**VENUE**  
Bottisham Village College 3G

**KICK OFFS**  
Tuesday evenings 7:00 or 8:00pm

**COST**  
£25 per team each match-day

**FORMAT**  
5 a-side / 40 minute games / 10 week playing season

**SPACE**  
8 Teams

Contact: Ashley Dean  
T 01223 209034  
E [Ashley.Dean@CambridgeshireFA.Com](mailto:Ashley.Dean@CambridgeshireFA.Com)

[www.cambsfaestirefa.com](http://www.cambsfaestirefa.com)



## BOTTISHAM NURSERY SPACES STILL AVAILABLE

- 30 hours free childcare available for eligible working parents
- Some spaces remaining for September 2019
- Enquire at the Primary school office for more information
- Telephone: 01223 811235

Come and visit our happy, child-led nursery. Our specialist members of staff will be excited to welcome you and show you around. Wonderful outdoor provision and a warm nurturing space. We look forward to hearing from you.  
Beechwood Avenue, Bottisham CB25 9BE

[www.bottisham.cambs.sch.uk](http://www.bottisham.cambs.sch.uk)  
email: [office@bottisham.cambs.sch.uk](mailto:office@bottisham.cambs.sch.uk);  
[twitter.com/BottishamPri](https://twitter.com/BottishamPri)

# D.K.TILL & SON IN LAW

## COAL AND SOLID FUEL MERCHANTS

Family run business for 40 years  
Coal, Logs, Charcoal, Gas, Compost

TEL: David Till; 01223 232947 - Kevin Crisp; 07523044521  
Email: [dktil@hotmail.co.uk](mailto:dktil@hotmail.co.uk)

# R & S SERVICES

## *PICTURE FRAMING*

For all your framing requirements including  
Tapestries, Notice Boards, Certificates,  
Ready-made Frames and Mount Cutting

Rear of:

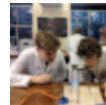
128 Fulbourn Old Drift  
Cherry Hinton  
Cambridge CB1 4LR

Proprietor:

Roy Northrup  
Tel: (01223) 243077



LANDMARK  
INTERNATIONAL  
SCHOOL



A small international school in Fulbourn, South of Cambridge,  
**welcoming pupils aged from 4 to 16 years.**

We have experienced and enthusiastic teachers delivering a broad and engaging curriculum to small classes of pupils from Britain and beyond. We offer excellent pastoral care and are non-selective academically. Transport via school minibuses from central Cambridge and surrounding villages.

*To arrange a visit, please call:*

**Mary Greer on 01223 755100/07400 584015**

or email [mary.greer@landmarkinternationalschool.co.uk](mailto:mary.greer@landmarkinternationalschool.co.uk)  
[www.landmarkinternationalschool.co.uk](http://www.landmarkinternationalschool.co.uk)

Landmark International School is a registered charity.

## *News from Bottisham Medical Practice Patients' Group*

News about the shortage of GPs and staffing in some practices emphasises how fortunate we are with our practice here. Nevertheless our doctors still welcome any suggestions to make things better for their patients, which is where our Patient Group comes in, illustrated by the recent automation of the entrance doors as we had requested.

**Tombola and Red Bucket:** Despite the inclement weather our stall at the Bottisham Village Fete together with the Red Bucket raised a further £121.30 towards our funds saving to buy extra equipment for the surgery. Our thanks to all who contributed.

**On Line:** We are asked to use the on line service to book appointments and for repeat prescriptions wherever possible.

**Missed Appointments:** There are still too many missed appointments, which could have been given to another patient needing one. This also costs the NHS money so please cancel with reception if you are not going to attend. You can arrange with reception to have a text reminder sent to you if this would help.

**Extended Hours:** From 1 July there will be extra appointment times on Mondays and Tuesdays with pre bookable appointments from 7am and over the lunch time period 12 – 3pm. These appointments will only be pre-bookable and on line. The surgery phone line will not open earlier.

**Walks for Health:** The next walks with our accredited walk leader Steve Gilson start at 11.00 am from the surgery car park on 5 and 24 July, 9 and 21 August, 13 and 25 September 2019. Do join Steve for a walk he would be delighted to see you. Walks from Anglesey Abbey continue on Thursdays at 10am from the reception area.

**Next Meeting:** Next meeting will be **Thursday 25 July 2019 at 6.30pm** at the surgery.

---

## *Bottisham Community Library Association*

---

Many apologies to the leader of our Lego Club as I got her name wrong. It is of course Morven LANGDON and I should have known better (she says she has been called much worse!!) Sorry. July dates for the Lego Club are Saturdays 6th and 27th July.

We shall be holding our AGM in the Library on Tuesday 9th July at 7.00pm. Please come. Sue Wills, Head of the Cambridgeshire Library Service will give a short presentation.

We held a successful book sale at the Village Fair and made a good contribution to our funds from the sale of books recently donated. Thanks to all concerned.

Did you know that books borrowed from the mobile library or nearby public libraries can be returned to Bottisham library?

*Sylvia Overton*





# SANICLEAN

DRAIN & PLUMBING SERVICES

**R. BRISTLEY** Est. 1974

9 Collings Place, Newmarket

- *Drains Unblocked Fast*
- *Toilets, Baths and Sinks*
- *Guttering and Downpipes*
- *Drain repairs and CCTV Surveys*
- *High Pressure Water Jetting*
- *Domestic and industrial*
- *All Work Guaranteed*

**Newmarket (01638) 662439**

**Mobile 07970 038404**

**[www.rbristley.co.uk](http://www.rbristley.co.uk)**

Fit to live life – for the rest of your life!

# MOVES *Fitness*

## QUY VILLAGE HALL

Mondays 8:00pm – 9:00pm

Dance aerobics for health & fitness

**EVERYONE WELCOME**

£5.00 per session

**Exercise really can be this much fun!**

Contact Mel Wilson for more information: 01223 811109



Find me and Moves Fitness on Facebook

[mel@mwilson04.plus.com](mailto:mel@mwilson04.plus.com)  
[www.movesfitness.com](http://www.movesfitness.com)



My love for dogs

An alternative to Kennels

A personal, caring approach to dog care.

In our home, your dog will receive two hour-long walks every day as well as treats, socialisation with other dogs and the administration of any required treatments.

- Fully insured and police checked
- Licensed by Sth. Cambs. District Council.

For further details call Amanda on  
07903 806750

Based In Steeple Morden near Royston.

# BURY CATTERY

*Offer  
Full Boarding  
Services for  
Cats only*

**CAMBRIDGE  
811945**

## *District Councillors' Report*

May has been busy with induction meetings at the District Council and starting to get to know the Parish Councils in Bottisham ward.

The Annual Council Meeting on Thursday 30 May 2019 largely decided and noted Council Appointments. There was one policy motion and adoption of a Neighbourhood Plan. We have both been appointed to the Finance & Assets Committee and John has been appointed to the Planning Committee. The Planning Committee meets once a month and visits all the sites under consideration in the morning. They then meet to discuss and decide each application in the afternoon. John's first meeting was on 12th June and didn't finish until 6.30pm, which he was told was not unusual.

The policy motion, which was seconded by Charlotte, committed the Council to revisit its plans for the MOD site which it is buying in Ely. Before the motion the Council was going sell all but 15 of the 92 properties on the open market. The 15 were to be sold as affordable shared ownership properties, with none available for rent. The motion asks the Council to allocate at least 46 of the houses as affordable, with a significant proportion of those available for affordable rent. There are 710 applicants on the waiting list for social housing and the Council has a target of 130 new affordable homes each year – a target it has not met since 2007/8. These 46 affordable homes would set us on track to meet that target in 2019/20 and offer homes to some of the 710 applicants on the waiting list.

Officers have been working on figures for the various options and there will be a special Council meeting on 19 June to agree what number of affordable houses could be delivered and how many of these could be for rent. The proposal will then be put to the Cambridgeshire & Peterborough Combined Authority (CPCA). The reason they are involved, is because the Government funding for affordable housing was given to the CPCA rather than to District Councils. We hope the CPCA will be willing to provide grant funding to allow East Cambridgeshire to deliver more affordable houses on the scheme.

The Sutton Neighbourhood Plan was adopted as part of the District's Development Plan. This means that all planning applications in the Sutton Area will be assessed against their Plan. They are only the second Parish in the District to have a Neighbourhood Plan, with 6 other Parishes working on their plans. There were calls for the District to give more encouragement and support to Parishes to develop their own Neighbourhood Plan.

Our next District Councillors' Surgery is on Monday 22 July at 6.30-7.45 pm at the Memorial Hall Brinkley, followed by a 'Meet your Councillors' at 8.00pm in the Red Lion, Brinkley. Following that, we will hold a Surgery on Thursday 22 August at 6.30-7.45 pm in the Village Hall Swaffham Prior, followed by a 'Meet your Councillors' at 8.00pm in the Red Lion, Swaffham Prior.

*Charlotte Cane & John Trapp, June 2019*

### **Morgan Wright**

Malcolm, Bonny and Kyla would like to thank all of you who kindly passed on your condolences and support on the sudden loss of Mogs in March this year to Sepsis. Your thoughtful words and generous contributions to UK Sepsis Trust in his memory have and continue to to give us all much solace - *Malcolm Wright*

# K.J.P.

## Building/Maintenance



Including:

Design, landscapes, patios, fencing,  
gardening, decking, painting,  
decorating, tiling, all interior work,  
etc.

**Tel: 01223 812021 or  
mobile 07799 504043**

## P. Marsh Electricals & Household Maintenance

(Kitchen & Bathroom Refits)

### Part-P NICEIC registered Electrician

Testing and certification of electrical systems  
Periodic Inspections  
Fault finding and repairs  
Fuseboard upgrades  
New Installations  
Full / partial rewiring  
Sockets  
Lighting  
Showers (all types)  
Power to sheds / garages  
Security and outdoor lighting



**General household maintenance from a  
dripping tap to a full kitchen/bathroom refit**



**01638 744 281  
07941 107 321  
(Based in Burwell)**

[www.pmarshelectricals.co.uk](http://www.pmarshelectricals.co.uk)

**FREE  
Estimates &  
Advice**



**BRADSTONE**

- All Driveways & Block Paving
- Site & Garden Clearance
- Driveway Cleaning & Sealing
- Fencing, Trellis Work & Decking
- Patios & Paths
- Turfing & Seeding
- Concrete Crushing
- Grab Hire & Digger Hire

**[amsbuildingandlandscaping.co.uk](http://amsbuildingandlandscaping.co.uk)**

**OFFICE: 01638 721 893 | SITE: 07789 261 266**

# Rayment's

## Vehicle Servicing and Repairs

We provide a fast, friendly and reliable service with competitive prices, for all cars and light commercials



**Find us at:**  
Unit 4 Broads Road  
Business Park  
Burwell  
CB25 0BT

**01638 744326**

[raymentsvehiclerepairs@outlook.com](mailto:raymentsvehiclerepairs@outlook.com)

[www.raymentsvehiclerepairs.co.uk](http://www.raymentsvehiclerepairs.co.uk)

**Servicing Brakes Tyres Exhausts Clutches  
Cambelts Diagnostics MOTs Air Conditioning**

## OvenPad Cleaning Services

I will professionally & efficiently  
clean ovens, ranges, Agas,  
ceramic hobs, extractors,  
microwaves and BBQs.

**It's a dirty job, why  
not give me a call?**

Contact **Paddy Kelly** on

Tel: 01638 742703

Mob: 07752 631343

Email: [info@ovenpad.com](mailto:info@ovenpad.com)

Website: [www.ovenpad.com](http://www.ovenpad.com)

## ANDREW EVANS

01954 780 999 – 01223 864335

email: [andrew@omegaclean.co.uk](mailto:andrew@omegaclean.co.uk)

[www.omegaclean.co.uk](http://www.omegaclean.co.uk)

- ✓ Carpet Cleaning
- ✓ Upholstery Cleaning
- ✓ Tile & Grout Cleaning
- ✓ Leather Cleaning
- ✓ Oriental Rug Cleaning
- ✓ Carpet & Fabric Protection
- ✓ Allergy Relief Treatment
- ✓ Odour Eradication
- ✓ Stain Removal
- ✓ Carpet Fitting

Family Business Since 1980



# PEST PROBLEM?

CALL DRE PEST CONTROL

01954 230708

07789 502556

- Commercial & Residential
- One - off Call Outs
- Management Contracts

Cambridge & surrounding areas  
[www.drepestcontrol.co.uk](http://www.drepestcontrol.co.uk)





**‘Every second counts’** – a phrase no more relevant than to the business of saving lives ! That’s what EAAA does and hopes to do 24/7 before long. Currently there are seven and twelve hour overnight gaps in our helicopter medical service from Cambridge and Norwich bases respectively. Incidents where critical care was required have been extensively reviewed over the course of a year, the results of which confirm a significant region-wide need for overnight critical care. Although dealing with large numbers of night time incidents, so much more could be done – perhaps up to an additional 600 missions a year. Extra pilots, doctors and CCPs will be required to become fully 24/7 operational by 2020. Income needs to rise to meet this challenge and we need more ‘on the ground’ volunteer support. Do you have time on your hands, and the motivation to do something great in company with like minded people from all walks of life? Why not get in touch – there are lots of opportunities to become involved, helping to raise much needed funds to maintain and expand our services. Lots of people and organisations get involved – any ideas such as sponsored walks, swims and runs, teas and coffee mornings are all welcome.

National Air Ambulance Week is taking place w/c Monday 9th September – we will need lots more volunteers - Over to you.

Of course and as usual, a huge THANK YOU to all who already support EAAA – no matter how. If you don’t already, how about joining our weekly lottery, or set aside a tax-efficient bequest in your will? Gifts in wills now fund one in every four missions. Finally, keep a weather eye open for the return of Emergency Helicopter Medics later in the year – EAAA will feature flying from both from Norwich and Cambridge.

**Together – we save lives. [info@eaaa.org.uk](mailto:info@eaaa.org.uk) 0345 669 999**

*Michael White*

## **WEA**

The future of our WEA class in Bottisham is very uncertain.

The Government has decided that devolved authorities should now be responsible for adult education. The WEA's bid for funds to Mayor Palmer was refused and as a result there will be no funding for any WEA classes in Cambridgeshire and Peterborough.

At present it looks as though costs for students will be unacceptably high but we are still trying to come to some arrangement with WEA. If this proves impossible we are looking at other ways of running a course.

We do hope that you will continue to support us and we will keep you informed of our progress in the September issue.

*Valerie Leake, Chairman*



**Copy deadline for next issue is 14 August.**

*Please send material to the editor at [BottishamCresset@gmail.com](mailto:BottishamCresset@gmail.com)*

# NW BROWN

— WEALTH MANAGEMENT —

Providing bespoke solutions to your  
financial planning and investment needs

01223 357131

[www.nwbrown.co.uk](http://www.nwbrown.co.uk)

NW Brown Wealth Management is a trading name of NW Brown & Company Limited. NW Brown & Company Limited is authorised and regulated by the Financial Conduct Authority (191123).

## TV AERIALS

## SATELLITE

## DIGITAL FREEVIEW

Installations

Extra points etc.

Tuning in of TVs, Digiboxes etc.

Experienced local engineer

## RICHARD FORTEY

01638 662119

No Call Out Charge

Peter Hains, a previous warden at the Village College, who recently trained as a Cambridge Blue Badge Guide treated us to an imaginary walk through the City focussing on the literary students who attended the many colleges. Milton attended Christ's College and is reputed to have written Paradise Lost whilst sitting under the Mulberry tree in the garden. He had lost his sight to glaucoma so this makes the poem even more impressive. Colin Dexter was another student as was C P Snow who wrote novels on University life. Jesus College had students Laurence Sterne, Samuel Taylor Coleridge and more recently Nick Hornby who taught briefly at Parkside School.

Samuel Pepys studied at Magdalene College – his diary completed between the ages of 27 to 36 years old was originally written in code and is now in the Pepys Library which houses his personal library. Charles Kingsley, C S Lewis and Julian Fellowes were also at Magdalene. Peter read excerpts from the various books and poems and was a most interesting and entertaining speaker. He will certainly have to return and take us on the next part of the journey.

We reached the finals of the Cambridge Federation Darts Competition but sadly lost to Waterbeach WI, the eventual winners, in the semi-final.

We were involved with running a cake stall (a good boost to our funds) and providing teas throughout the afternoon at the Village Fete. Fortunately the weather improved during the day but I understand the gazebo will not live to fight another day. Thank you to all members who helped in providing cakes or on the day.

There will be a walk on the evening of Thursday 4th July from the Triangle for a meal at the Black Horse Swaffham Bulbeck and we have also arranged a coach outing to Woburn Abbey on Tuesday 13th August. The cost will be £25 to cover travel and the entrance fee – Please contact Jenn White on 01223 811600 if you are interested in either of these events.

At our next meeting on 16th July Nick Wyatt will speak on Recycling. Our raffle proceeds will be passed to the East Anglian Air Ambulance Charity and members are asked to wear yellow.

We meet at Queens Court at 7.30 pm and visitors and new members are most welcome.

*Sylvia Overton*

### *Little Lode Monkeys Playgroup*

**THURSDAYS 9.30 - 11AM (TERM TIME) - LODGE CHAPEL £1 /FAMILY  
SUMMER TERM DATES - EVERY THURSDAY UNTIL THE 18TH JULY  
(TEDDY BEARS' PICNIC)**

**AUTUMN TERM DATES - 5TH SEP - 12TH DEC  
(END OF TERM PARTY) (HALF-TERM - NO GROUP - 25TH OCTOBER)**



We are a stay and play toddler group for pre-school kids and their adults. We put out various toys (bikes, prams, trains, dolls, cars etc) and let the little ones dive in! Each week we have a different craft activity. Last term the kids (and adults!) enjoyed making Chinese New Year animal masks, Easter baskets, bird feeders and stained glass pictures. Future craft ideas - seed planting, sea side pictures and streamer making.

There is tea and coffee for the adults, and breadsticks and raisins for the kids. And usually biscuits too! It's a very relaxed and friendly group and a good place to chat and get to know each other. Do drop in for a play! - (For more info, check out our Facebook page or contact Laura on [l.overton.83@googlemail.com](mailto:l.overton.83@googlemail.com))

# Paying too much for your glasses?

## Save Money - Buy Direct!

Visit our factory shop to see our fabulous range of Discount Prescription Eyewear

- Hundreds of frames to choose from, including designer frames from Ray-Ban, Polo Ralph Lauren, Oakley and PRADA
- Specialists in high and complex prescriptions
- Wide range of prescription sunglasses
- Full range of sports eyewear
- Save up to 75% on premium frames and lenses
- Fast turnaround

Official stockists



**POLO**  
RALPH LAUREN

**OAKLEY**

**PRADA**  
EYEWEAR



**We are open 9am to 5pm Monday to Friday, and 9am to 1pm Saturday**



**ALL EYES**  
SPECTACLE MAKERS  
SINCE 1987

Call us

**01954 231545**

Visit our website

**www.all-eyes.co.uk**

20 Norman Way Industrial Park, Over, Cambridge CB24 5QE

## SN Handyman Services

A friendly and reliable service for all  
your general home and garden maintenance.

- Painting & Decorating (interior/exterior) ►Garden Maintenance ►Tiling & Glass  
Splashbacks ►Gutters Cleared & Repaired ►Power Washing Patios ►Sealant  
Replacement (bathroom/kitchen) ►Curtain Poles & Blinds  
►Flat Pack Furniture (assembly) ►Shelf Fitting ►Small Glazing  
►Conservatory Cleaning ►**and more...!**

**Free estimates & advice given on all work**

References available upon request.

**PLEASE CALL**

**Steven Newton** ►07713 859712 ►01223 813701

50 Commercial End ► Swaffham Bulbeck ► CB25 0NE.

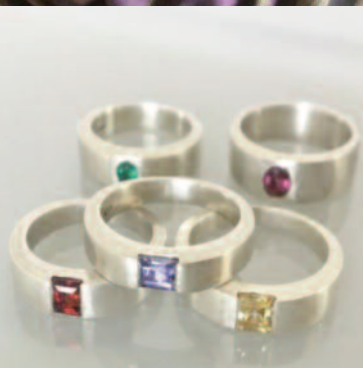
# CAMBRIDGE OPEN studios 2019

Visit Cambridgeshire's artists  
in their studios this July

Weekend 1 JULY 06-07  
Weekend 2 JULY 13-14  
Weekend 3 JULY 20-21  
Weekend 4 JULY 27-28  
11am to 6pm

FREE  
ENTRY

[www.camopenstudios.co.uk](http://www.camopenstudios.co.uk)



## **168a Heidi Lichterman - Weaver/artist - Weekends: 2, 3, 4**

The Old Courthouse, 123 High Street, Bottisham, CB25 9BA - [heidilichterman.co.uk](http://heidilichterman.co.uk)  
Ikat-dyed silk and wire wall hangings and silk scarves and shawls.

## **168b Tony Davison - NEW - Contemporary landscape paintings - Weekends: 2, 3, 4**

The Old Courthouse, 123 High Street, Bottisham, CB25 9BA - [tdart.blog](http://tdart.blog)

A selection of paintings in a variety of media and covering a range of subjects, including abstract landscapes. Commissions undertaken.

## **168c Claire Howieson - Contemporary jewellery - Weekends: 2, 3**

The Old Courthouse, 123 High Street, Bottisham, CB25 9EG - [clairehowieson.com](http://clairehowieson.com)

Striking contemporary jewellery in silver and gold, incorporating freshwater pearls, precious and semi-precious stones. Commissions welcomed.

## **168d Jeremy Nicholls - Decorative woodwork - Weekends: 2, 3**

The Old Courthouse, 123 High Street, Bottisham, CB25 9BA - [jeremynicholls.info](http://jeremynicholls.info)  
Jewellery boxes, mirrors and small items of furniture in wood, with original decorative paintings on metal leaf. Some separate paintings on panels.

## **169 Matthew Blakely - Porcelain and wood-fired pots - Weekends: 2, 3**

9 Abbey Lane, Lode, CB25 9EP - [matthewblakely.co.uk](http://matthewblakely.co.uk)

Rich wood-fired stoneware and softly glazed porcelain pots, ranging from mugs, vases and bowls to large decorative pieces. Please park on Lode High St.

## **170 Jamie Sugg - Landscape painting, wildlife drawings - Weekends: 2, 3**

Downing Farm, Station Road, Swaffham Bulbeck, CB25 0NW - [jamiesugg.co.uk](http://jamiesugg.co.uk)  
Exhibition of landscape and wildlife art in acrylics, watercolours and coloured pencils.  
Greetings cards and gifts also available.



Email [info@angliarhearing.co.uk](mailto:info@angliarhearing.co.uk)

## **AN INDEPENDENT AUDIOLOGY CLINIC BASED IN CAMBRIDGE**

### **Hearing Tests**

Free Hearing Tests  
Detailed Hearing Assessments  
Most Up-To-Date Testing Methods

### **Hearing Aids**

Get a hearing aid in a matter of days  
Free 30-day no-obligation trial

### **Ear Wax Removal**

Micro-suction • Irrigation • Video Otoscope

### **Tinnitus Treatment**

Fast appointments. Many treatment options  
Member of British Tinnitus Assoc.



**Grain House, Mill Court, Great Shelford, Cambridge, CB22 5LD**

**BOOK ONLINE! [www.angliarhearing.co.uk](http://www.angliarhearing.co.uk) • Phone 01223 661399**



## PUBLIC URGED TO STAY FIRE SAFE IN HOT WEATHER

Cambridgeshire residents have been urged to stay fire safe when outdoors this summer.

With temperatures forecast to be similarly high to last year, fires in open areas of land can easily spread and become out of control.

Group Commander Paul Clarke, head of community fire safety at Cambridgeshire Fire and Rescue Service, said: “We want to help ensure that people enjoy the sunny weather while it’s here safely. High temperatures and dry areas of land can be perfect conditions for a fire to spread. Something as simple as not stubbing a cigarette out properly, or using a disposable barbecue on grass, can start a fire that can develop quickly.”

There are seven simple steps we urge residents to take to help prevent an outdoor fire:

### Help prevent outdoor fires

- Ensure cigarettes are fully extinguished before disposing of
- Do **not** throw cigarettes out of car windows onto grass verges or vegetation
- Disposable barbecues should be placed on bricks - do not place directly on to grass
- Dispose of glass bottles properly - the sun's rays can shine through the glass, causing a fire
- If lighting a bonfire, ensure it is away from sheds, fences, overhanging foliage and property - **NEVER** leave it unattended. Ensure it is completely extinguished when leaving it.
- Use barbecues on a hard, flat surface away from buildings, grass and shrubs
- Talk to your children about the dangers of starting fires outside. Remember - arson is a crime

For more information or to get in touch contact us at [firefire@cambsfire.gov.uk](mailto:firefire@cambsfire.gov.uk) or on 0800 9179994. Like us on Facebook for regular updates [www.facebook.com/cambsfrs](https://www.facebook.com/cambsfrs) or follow us on Twitter @cambsfrs.

T  
P  
M



**Taylored  
Property  
Management**

Your letting property is a key asset in your life, ARE you getting full value from it?

If you are not and you want a service that will release it's full potential and a free rental appraisal then come to the people that are able to offer you a "Taylored" package to suit your needs.

We offer a full comprehensive property management service, just as though the property was our own all at affordable rates to suit you:

**FREE** Energy performance certificate

**FREE** Initial letting fee

For your own personal service contact

Steve Taylor on 01638 741717 or 07753 272765 or email [steve@tayloredpm.co.uk](mailto:steve@tayloredpm.co.uk)  
9 Station Gate, Burwell, CB25 0BZ



**CHAPEL  
DENTAL**

84 Angle End  
Gt. Wilbraham  
CB21 5JG

Tel: 01223 811844

**Claire Jackman BDS & Associates**

NHS, DENPLAN & PRIVATE TREATMENTS

With special interests in implants and orthodontics

Monday / Wednesday / Thursday / Friday 09.00-17.00

Tuesday 09.00-19.00 Saturday 09.30-15.00

**New Patients Always Welcome**

[www.chapel.dental](http://www.chapel.dental)



**BOTTISHAM  
MEETING POINT**

every  
**WEDNESDAY**  
**10.30am – noon**

in the Poppy Lounge  
at the Sports & Social Club

A place where you can meet old friends, make new friendships, relax, chat and enjoy coffee, cake and biscuits in a friendly relaxed atmosphere.

**EVERYONE WELCOME**

**ADMISSION FREE**



# **BOTTISHAM**

**SCHOOL OF MOTORING**

**Tel: 811556**

***All qualified instructors  
with extremely high  
1st time pass rates***



## **Martin Ball**

**Firewood & Timber Merchant**

[www.martinballfirewood.co.uk](http://www.martinballfirewood.co.uk)  
[martinball.firewood@btconnect.com](mailto:martinball.firewood@btconnect.com)  
01799586513 01371830503 07980258003

# D.S. FREEMAN

## Painters & Decorators

- Residential & Commercial
- Interior & External
- Fully Insured
- All Aspects Undertaken

duncan@dsfreeman.co.uk

**Tel: 01223 812920**

Longmeadow

## WOULD YOU LIKE TO RECEIVE 45P PER MILE BY VOLUNTEERING?



It would help us provide transport for people who are unable to use conventional public transport to attend hospital, dental appointments, visit loved ones, etc.

### Do you:

- have access to a roadworthy car?
- like helping people?
- have a day to spare each week?
- hold a full driving clean licence?
- Willing to undertake an enhanced DBS (CRB), check.

For more information please  
Call Granville on 01353 666166  
or Email: [granville@vcaec.org.uk](mailto:granville@vcaec.org.uk)  
or visit: [www.vcaec.org.uk](http://www.vcaec.org.uk)

## E.J. DENSTON

### KITCHENS & CARPENTRY

All aspects of Carpentry & Joinery  
New Build 1st & 2nd fix carpentry  
Purpose made cupboards, wardrobes  
& Bookcases  
Kitchens supplied & fitted  
Renovations & small build works



**Tel: 01223 813279**  
**Mobile 07711 578687**

## Carpentry Services

# TONY MARTIN

Over 30 years experience

***Any carpentry jobs  
undertaken — BIG or small***

Call Tony  
for a free estimate  
**Tel: 01223 812786**  
**(Bottisham)**  
**Mobile: 07767475987**



## Morgans Hairdressers

Tel: 01223 811646

### Creative styling for the family

- Creative cutting
- Hair up
- Colouring
- Colour correction
- Perming

Open: Tuesday - Saturday, Wednesday  
until: 8.00pm



10 Herschel Court, High Street,  
Bottisham, CB25 9DQ



Follow us on facebook



The Complete Local Signmaking Service

- All aspects of Vehicle Signage
- Window Graphics & Etching
- Safety Signs
- Shop Fascia's
- Labels, Stickers & Magnetic's
- A-Boards
- Banners
- Full Colour Digital Printing
- Solar Films & Etched Vinyl

Have you a picture you would like on Canvas?

07900 606400  
01223 214294

[www.footprintsignsandgraphics.com](http://www.footprintsignsandgraphics.com)  
[info@footprintsignsandgraphics.com](mailto:info@footprintsignsandgraphics.com)

SUMMIT



## LANDSCAPES

PAVING - DRIVEWAYS - BRICKWORK  
CARPENTRY - GROUNDWORKS



[www.landscapingpaving.co.uk](http://www.landscapingpaving.co.uk)

PHONE: 01223-929394

## **S. NEAL** *Carpentry and Small Works*

Offering a high quality  
carpentry and small works  
service in Bottisham and  
the surrounding area.

FLOORING • HANGING NEW DOORS  
KITCHEN RENOVATIONS • DECORATING •  
TILING • LANDSCAPING  
BESPOKE CARPENTRY



**07703 043243**

SNealCarpentry@Gmail.com  
@S.Nealcarpentry

## **Dale Parker**

*Landscape Gardener  
and Tree Surgeon*

Turfing, Seeding & Planting,  
Patos and Drives  
Block Paving & Natural stone

### **Trees**

Topping, Lopping,  
Shaping and Felling  
Hedge Cutting  
Fencing

**FREE ESTIMATES**

**Tel: 01284 728497**

**Mob: 07799 671010**



# ONG

“Successful entrepreneurs are  
givers and not takers of  
positive energy.” ANONYMOUS



**codge.com**

**info@codge.com**

**01449 675 548**

Design & Origination • Website Design & Maintenance • Email Marketing • Digital Publishing  
• Logo Creation • Cartoons & Illustrations • Theatrical, Product Photography & Retouching •  
Business Stationery • Promotional Flyers & Posters • Newsletters & Magazines • Programs &  
Catalogues • Books & Brochures • Calendars • Reports • Signage, Displays & Banners •  
Personal & Wedding Stationery • Mac Training



# Are You Paying Too Much For Your Medical Insurance?

## Independent And FREE Advice

- **Switch to an alternative scheme** – If you are currently insured, switching to a competitor can mean ***substantially lower rates***
- **Pre-existing conditions covered** – It is often possible to include pre-existing medical conditions currently covered by your existing provider
- **Improve your coverage** – We can frequently improve your cover whilst also lowering the cost of your premium
- **Complexities of different schemes** – In many cases, people are over insured – we can ensure you are covered with a scheme that meets your individual needs and requirements
- **Full cover for cancer treatment** – Many policies do not cover cancer in full – we are able to advise on your current level of coverage



For further information, please call Simon Lively at  
M&L Healthcare Solutions:-

**FREEPHONE 0800 145 5838 or 01223 881779**

Email: [simon.lively@mlhs.co.uk](mailto:simon.lively@mlhs.co.uk)

quoting ref: The Cresset

M&L Healthcare Solutions is authorised and regulated by the Financial Conduct Authority. (FCA Reference number 554206)

## **PREMIER INVESTMENT MANAGEMENT SERVICES LTD**

INDEPENDENT INVESTMENT ADVISERS Authorised &  
Regulated by the Financial Conducts Authority

Specialist in Isa's & Isa Transfer's  
Investment Planning & Portfolio Management

To arrange a free consultation ring **01223-882422** or email  
**pims@globalnet.co.uk** or visit **www.pims-uk.com**



### **“Nesslands of Burwell”**



Your local Dog Kennels, Cattery and Doggy Day Care!  
Delivery and Collection Service Available !

Fully Licensed by ECDC and Veterinary Inspected.  
Ness Road, Burwell. CB25 0DB [www.nesslands.com](http://www.nesslands.com)

**Call Tim or Anya on 01638 720623**



## **1st Bottisham Scout Group Hiring Service**

Bottisham Scout Headquarters is available for hire for  
children's parties, dance lessons, meetings, keep-fit,  
jumble sales, drama, music practice sessions etc.

**For hall hire contact [bottishamhuthire@outlook.com](mailto:bottishamhuthire@outlook.com)**



**Sab** saint  
andrews  
bureau

THE PROPERTY SPECIALISTS

# FOR ALL YOUR PROPERTY NEEDS

**Lettings - Sales  
Estate Management - Insurance**

Your local independent property agency.  
A family business operating since 1959.

**CALL OUR OFFICES TO ARRANGE A  
FREE VALUTATION**

**Kane Astin - [kane@sab.co.uk](mailto:kane@sab.co.uk)**

**Cambridge**  
01223 352170

**Swaffham Bulbeck**  
01223 352170

**London**  
0203 786 3145

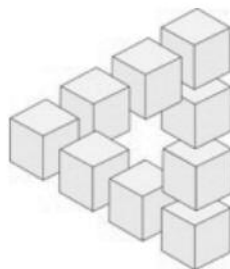
**Hertford**  
01992 501752

**Royston**  
01763 242222

**Longstanton**  
01954 781963

**[sab.co.uk](http://sab.co.uk)**





## INDEPENDENT FINANCIAL SOLUTIONS

You know that the State Pension is not enough, but you don't know what it will provide!  
You want to save for your retirement, but you don't know what you will need!  
You wish to protect your family against financial disaster, but don't know what cover you require!  
You need to make your money work hard, but don't know which option is best for you!  
You would like to reduce your tax bill, but you don't know how!

.....  
**Whether you own a company, are self employed, employed or retired, we can help!**

**We don't believe in adding to your problems.**

**We believe in clear and simple solutions.**

Let us provide you with an **INDEPENDENT**  
review of your financial situation.

**The value of investments and income from them may go down.  
You may not get back the original amount invested.**

*Tax treatment is based on individual circumstances  
and may be subject to change in the future*

**Tel: 01638 615343 or Fax: 01638 615342**

**E-Mail: [qc@independent-financialsolutions.co.uk](mailto:qc@independent-financialsolutions.co.uk)**

**Website: [www.independent-financialsolutions.co.uk](http://www.independent-financialsolutions.co.uk)**

Newnham Farmhouse, 16 Low Road, Burwell, Cambs, CB25 0EJ  
Partners: Quentin Cooke (authorised Independent Financial Adviser) & Alison Cooke

## ***Bottisham & District Gardening Club***

Peter Jackson who recently retired from Scotsdales kindly stepped in at the last moment to talk about growing fruit and vegetables.

He explained that with the tendency to smaller gardens and the changing weather conditions we have to learn to adapt. Potatoes are now grown in sacks and many plants can be grown in containers, hanging baskets, growbags and raised beds. Crops and yields are very good especially if they are on grafted stock – similar crop from 3 grafted tomato plants compared with 15 of the old plants. He suggested we grow what we like, fruit and veg not often available in supermarkets and grow in smaller quantities from seed (seed can be kept for many years if it is stored in an airtight container). Fruit trees are now much smaller and can be grown in various shapes. Aim to eat all the crop as due to warmer winters and no cellars or cold pantries it is very difficult to store fruit. It is not cheap to grow vegetables and fruit and there is obviously a lot of hard work involved but the taste more than makes up for it. He completed his most interesting talk with pictures explaining his talk and answered several questions from the floor.

As I write there are still places available on our summer outing to the **RHS Garden at Hyde Hall in Rettendon on Wednesday 17th July**. Coach fare and entrance is £15 per person for members and non-members are most welcome at £20 per person. Please contact Peter Bullock on 01223 811716 if you are interested.

Members are reminded of the visit to the **Mill Garden, Impington evening visit on Tuesday 13th August**. Transport is available if necessary.

We ran a gardening stall on behalf of our club at the Bottisham Village Fete and made a healthy profit from the plants on sale. Thank you to the many contributors and helpers on the day.

**GARDENING CLUB ANNUAL SHOW** - I regret to tell you that the Club will not be holding an Annual Show this year. It has been a regular community event for over 40 years (the only year we missed was Princess Diana's funeral). The committee are all volunteers, several with commitments to several other village groups and are unable to take on this considerable workload. A Show takes a tremendous amount of work behind the scenes in arranging the day. Sorry.

*Sylvia Overton*

---

**Copy deadline for next issue is 14th August.**

*Please send material to the editor  
at [BottishamCresset@gmail.com](mailto:BottishamCresset@gmail.com)*

**ANDREW  
HULME**  
Chartered Accountant



12 Tunbridge Lane  
Bottisham

Cambridge  
CB25 9DU

Tel. 01223 811323

[andrew@hulmeacc.co.uk](mailto:andrew@hulmeacc.co.uk)

- Accounting
- Bookkeeping
- Club Accounts & CASC Assistance
- VAT Returns
- Management Accounting
- Personal Tax
- Business Advice



**PET TIME**

[www.pettime-petcare.co.uk](http://www.pettime-petcare.co.uk)

No pet too small!

Dog walking  
Cat, dog and small animal feeding visits  
Dog home boarding  
House and pet sitting  
Doggy daycare

Contact Michele:

07765 791227

01638 508337

[info@pettime-petcare.co.uk](mailto:info@pettime-petcare.co.uk)

All animals from hamsters to horses  
cared for just as you would want.  
Fully insured, first aid trained  
and police-checked.

**STEPWISE FOOTCARE**

**Vivien Honeyborne-Martins**

MA(Cantab) BSc(Hons) MChS HPC Registered



**Clinic-based Chiropody/Podiatry**

- *Chiropody*
- *Biomechanical assessment*
- *Insole/orthotic therapy*
- *Children's foot problems*
- *Foot/knee pain problems*
- *Lunula Laser™ fungal nail treatment*
- *Swift Microwave* for verrucas

7 Swaffham Road, Burwell, Cambridge, CB25 0AN

Moving to new Burwellness Centre from Nov 2018  
The Old Telephone Exchange, 10 Ness Road, Burwell

Tel: 01638 741973

[stepwise-footcare.co.uk](http://stepwise-footcare.co.uk) [vrmpost@hotmail.com](mailto:vrmpost@hotmail.com)

**Tutor**



Experienced tutor:

Fully qualified former primary school  
teacher and home educator based in  
Little Wilbraham

Expertise in:

Primary

Key Stage 3: Maths, English,

History & Geography

Study skills & revision techniques

For information and to arrange a free  
meeting/consultation contact:

Anne-Marie McCubbin BA(Hons) PGCE

email: [info@wingstoflyeducation.co.uk](mailto:info@wingstoflyeducation.co.uk)

tel: 01223 811939

## *Thoughts of a Sports Nut*

Not for the first time, I find myself writing this page in a beautiful European city, bathed in the early Summer sunshine, whilst on England 'duty'! This time the city is Porto, the scene of Lt. Gen. Sir Arthur Wellesley's (later the 1st Duke of Wellington) famous defeat of Napoleon's army back in May 1809, which effectively saved Portugal from French rule and underlined the oldest military alliance in the world (founded in 1386 as the Aliança Luso-Britânica and still in force today!)

But there was to be no English victory in the Nations League semi-final against Holland. With Southgate leaving out all Spurs and Liverpool players, England looked leggy and unimaginative, and succumbed to Holland's energetic high press. The Dutch possessed little cutting edge – as demonstrated in the final, losing to Portugal – but were gifted their win by an unusually benevolent English defence.

The defence was much tighter in the 3rd/4th play-off but we still lacked a goal threat and were relieved to see Pickford save the day by scoring our 5th penalty and saving the Swiss 6th in the shootout. A dull, pedestrian encounter, but at least we enjoyed the sunshine, in stark contrast with the soaking we took before and after the Holland game! I must just mention an extraordinary thing that happened as we were returning to our coach, via the Guimaraes town centre, after the Switzerland game: the local population lined the street in the main square and applauded the thousands of passing England supporters. We'd never seen anything like it before and, I'm guessing, neither had they! Lovely people!

Well, predictably enough, Liverpool won the European Cup in a very disappointing final against Spurs - the first time in the tournament's history that the match was completed with no yellow cards issued by the referee. He had his moment though when, in the first minute, doubtless with the forthcoming rule change in mind, he awarded a controversial penalty against the arm-waving Sissoko for a 'deliberate' handball. The die was cast, and thereafter Liverpool never really looked in danger of conceding a goal from a Spurs side, busy, but bereft of invention. If I was Lucas Moura, who was cruelly dropped by Pochettino after his semi-final hat-trick, in favour of a half-fit Kane, I would take my runners-up medal and run off to find another club! Well done both teams for an over-achieving season - they both secured some fantastic results but they look a way off being hailed as the two top teams in Europe!

On the same night, Andy Ruiz Jr, a somewhat lardy looking Mexican American, produced an unlikely attack on Anthony Joshua, after being floored himself in the third round, to strip Joshua of his World Heavyweight Boxing titles, proving yet again that anything is possible in sport, especially when the underdog has nothing to lose. Ruiz, a late replacement challenger, was 25/1 against for goodness' sake! Joshua retorted that this 'minor setback' would not prevent him making a triumphant return in the re-match; let's hope he has recovered his focus by then, after having succumbed to complacency this time!

In the meantime, I couldn't help a wry smile in May when I read that the Kick It Out campaign had to issue a hurried apology to Brighton & Hove Albion Football Club following an unwelcome, but highly predictable, comment from their Head of Development

*(Sports Nut continued on page 49)*

# Bottisham

## Post Office and Village Stores

12 High Street Bottisham Cambridge CB25 9DA

Tel: 01223 811281 PO Tel: 01223 812863

Shop opening: 5.30am - 9.00pm 7 Days

Post Office: 9am - 5.30pm Sat 9.00am - 2.00pm

### *Your All-in-One Shop*

Groceries, chilled & frozen food, delicatessen, confectionery, off-licence, haberdashery, household, healthcare, stationery and greeting cards.

Free local delivery of grocery orders

TV licence, Top-ups, elec/gas keys/tokens, money transfer, phone cards, congestion charges.

Newsagency with home delivery to Bottisham, Lode, Longmeadow, Quy,

Six Mile Bottom and Swaffham Bulbeck. Dry Cleaning & Floral Service

### FREE TO USE ATM MACHINE

Vehicle Licences • Personal Banking • Foreign Exchange

Phone Cards & Mobile Top-Ups • On-line Lottery.

## Rothwell's Carpet Cleaning

**Thorough, professional cleaning of Carpets, Upholstery, Rugs, Tile & Grout and Natural Stone floors.**

- 'Truck mount' cleaning system
- Family firm est 1993
- Great customer service
- We move all the furniture
- Fully Insured
- Highly trained & experienced
- **100% satisfaction or its free**

*If you use us,  
you'll recommend us!*



M2391

For a quote  
or advice please  
**07545 962 026**  
**01223 832 928**  
[www.rothwells.biz](http://www.rothwells.biz)



***(Sports Nut continued.)***

(whatever that is) Mr Troy Townsend suggesting that the club's sacking of manager Chris Hughton may have been racially motivated. Townsend repeatedly cites racism as the cause of disparity between the number of black and minority ethnic players in the country and the number who follow the managerial route. But, to (mis)quote William Shakespeare: "He doth protest too much, methinks!" Not only is he fundamentally misinterpreting the statistics, given that many black European and African millionaires have not the slightest interest in pitching themselves into the cauldron of management, he is actually setting the equality agenda back years by playing the race card every time someone with a brown skin suffers a setback. I didn't notice him bleating about the treatment of white managers when Frenchman Claude Puel was sacked by Leicester City in February, or when former England boss Steve McLaren was dismissed by Queens Park Rangers after only 11 months in post, did you? I could go on... but I won't.

Also in the meantime, the ICC World Cup began at The Oval at the end of May with England trouncing South Africa, thanks to a scintillating display of batting, bowling and fielding from Ben Stokes, including - of course- THAT CATCH! Such moments are what draw us irresistibly to elite sport and the Bottisham boys were privileged to savour another "I was there" moment with which to bore our grandchildren in the future!

On the local cricket scene, I am delighted to begin regular updates on the exploits of Bottisham & Lode Cricket Cub. At the time of writing the season's stats are P3 W2 L1. i.e. Wins over Cambridge III's and NCI II's by 32 runs and 8 runs respectively, but a 38-run defeat by Over. Callum Fullwood, currently tops the batting averages, scoring two half centuries already, with Tim Sale and Jordan Haynes also posting fifties. Pick of the bowling to date is Will Allen with 4 for 26 versus NCI.

For prospective spectators, upcoming fixtures at The Fassage, Lode are: -

13/7. v Over - 13th July, 27/7. v NCI II

I'm sure the lads would appreciate some support from our ever-growing local population!

*TTFN Gerry Daish*

---

## ***Sales, Wants and Swaps***

---



***IF YOU HAVE ANYTHING TO SELL OR WANT TO BUY OR EVEN TO SWAP, THEN THIS PAGE IS YOURS TO USE.*** Send details of Item, price and landline Phone Number to BottishamCresset@gmail.com. Max. 5 Items. Entries by 12th of the month for next months issue.

DESCRIPTION	PRICE	TEL
<b>Merrell Siren Sport Gore-Tex trainers</b> dark grey, size 8, worn once indoors only.	£25	811472

# COMPLETE PLASTERING

**TILING • DRYLINING • ALL BUILDING WORK  
CARPENTRY • SCREEDING  
LIME PLASTERING • PAINTING & DECORATING**

**Covering all of Cambridgeshire**

**CONTACT: GLENN WARDER**

**TEL. 01223 811991  
MOB 07734 904050**

**E-MAIL: COMPLETEPLASTERING@MSN.COM  
RELIABLE SERVICE FREE ESTIMATES**

## Chiropody In your own home

**Save £5**

**off your first treatment  
when you present this advert.**

**Call 07905 267114 for an appointment**

**Daniel Harris BSc Hons MChS**

**Fully qualified and Registered with Health Care Professions Council**



# DRAIN-PLUMB

*Plumbing, Heating & Drain  
Services*

## BLOCKED DRAINS CLEARED

- Gas Boiler Service & Maintenance
- Power Flushing of Boilers & Heating Systems
- Home Buyers CCTV Drain & Plumbing Surveys
- All Plumbing & Heating Repairs/Alterations
- All work Guaranteed

TEL: 01638 742873  
MOB: 07932 773515

7 NESS ROAD,  
BURWELL  
CAMBRIDGE, CB25 0AA

## BED AND BREAKFAST THE MEADOW HOUSE

2A High Street, Burwell,  
Cambridge. CB25 0HB



- En-suite rooms with colour TV.
- Large car park and grounds.
- Family rooms, children welcome.
- English Tourist Board 4 Diamonds.

*Self catering cottage also available  
at Swaffham Prior.*

Brian and Hilary Marsh

Tel: 01638 741926

Fax: 01638 741861

Website: [www.themeadowhouse.co.uk](http://www.themeadowhouse.co.uk)

## SQUEAKY MOUSE

**Local, Professional,  
Computer Help  
and  
Support**

**[www.squeakymouse.com](http://www.squeakymouse.com)**

**01223 852872**

**[support@squeakymouse.com](mailto:support@squeakymouse.com)**

**POWER CONTROL PANELS  
(CAMBRIDGE) Ltd.**

Also trading as  
**DB Electrical & Building Services**

**Dale Badcock**  
**07718 122538**

[dale.pcp@gmail.com](mailto:dale.pcp@gmail.com)



**All domestic work undertaken**

- Rewiring
- Lighting
- Burglar alarms
- Security lighting
- Lighting design
- Controls Specialist
- Renovations
- Alterations
- Kitchens & Bathrooms

Unit 2 Barnwell Business Park  
Cambridge CB5 8UX  
01223 212054  
[powercontrolpanels@gmail.com](mailto:powercontrolpanels@gmail.com)



*Rebecca Golding*  
*now has her new salon*  
*in Burwell*

*Tues*  
*9.30am-8pm*  
*Thurs*  
*9.30am-8pm*



*30 Years'*  
*Experience*  
*All aspects of*  
*Hairdressing*

*Tel. 07742 997474*

*Free Parking at*  
*67 Silver Street*  
*Burwell, CB25 0EF*



**TIM PHILLIPS  
& Co.  
Accountants**

Independent, specialist service for:  
**Small Business • Self Assessment  
Personal Taxation**

Free initial consultation – no obligation  
**EASY, FREE PARKING**

Copley Hill Business Park, Cambridge Rd., Babraham  
Off A1307 between Wandlebury and Babraham

**Tel: 01223 830044. [www.tpaccounts.co.uk](http://www.tpaccounts.co.uk)**

## **ARE WE SEEING THE RENAISSANCE OF A 'RURAL COMMUNITY'?**

As Bottisham has grown I've frequently heard it said that it's all happening far too quickly to be sustainable and that this is not helping to facilitate a proper rural 'Community Feel'. Others have commented that there are broader matters influencing the natural village environment which require better communication and more rigorous reflection. I do empathise wholeheartedly with both viewpoints but in order to revive or to instil a 'community spirit' you need a willing community. Sadly, my belief has been that we in Bottisham have tolerated 'Community Inertia' and so, over many years, have lost what was once a 'willing rural community' - most probably caused by above average growth for the size of village we are but also likely to be influenced by communities existing within a community.

Quite by coincidence this topic of 'community spirit' cropped up again recently whilst chatting with a number of acquaintances both old and new. Examples were conveyed about how some villages - where 'community forums' exist in one guise or another - pull together to promote a particular community project or objective. In these 'forums' community matters are raised and, where relevant, are proactively addressed allowing initiatives to be put in place without the burden or bureaucracy of local government. Often overseen by a small nucleus of folk this band of willing volunteers involve themselves in the sort of 'community action' that often sits outside the scope or remit of a Parish Council. And what makes these 'forums' truly remarkable is that local people are willing to be co-opted to help when a specific expertise or a vocational skill is needed. Furthermore these 'forums' can confront any issue and can formally represent a desired outcome or a particular opinion on an important concern.

It's gladdening therefore that we are at last experiencing some examples of an awakening particularly in the form of the Bottisham Community Sports and Social Club from what was the Bottisham Royal British Legion. And it's heart-warming that the village has not lost the BRBL completely and that it will still continue to use the facilities of 'The Club' as its base. But let's not leave it there, we also have the Village Fete Committee which has built on the enormously successful event staged last year by the WI and thanks must also go to the Primary School for once again hosting this occasion. Alas we were away - again - but I understand that many attractions were there and that there were opportunities to converse with local groups, clubs and societies.

Now whilst on the topic of local groups, I have heard mention about the probable cessation of the once very popular Bottisham Players - our very own local 'Am Dram' group that entertained this village for well over 40 years with at least two productions a year plus a pantomime. Could the remaining committee members possibly be persuaded, perhaps with the help of a willing resident(s) who knows about these things, to have another go at resurrecting this once 'village treasure'? Surely if Swaffham Bulbeck can do it... I do wonder what happened to those wonderfully heady days!



# ARCHITECTURAL DRAWINGS

FOR

PLANNING & BUILDING REGULATION APPLICATIONS

NEW PROPERTIES, EXTENSIONS, LOFT CONVERSIONS ETC

CONTACT US now to arrange a FREE on-site meeting at your convenience to discuss your project.

## ELY DESIGN GROUP

*'Architecture by Professionals'*

[www.elydesigngroup.co.uk](http://www.elydesigngroup.co.uk)

01353 649649

[mail@elydesigngroup.co.uk](mailto:mail@elydesigngroup.co.uk)

# Lloyds Gardens

**Friendly Affordable Reliable Gardening Service**

- All aspects of tree surgery
- Stump grinding
- Root ball removal
- Tree houses
- Garden Structures
- Bespoke clay pizza ovens

FULLY ACCREDITED AND INSURED

ALL WORK CARRIED OUT TO BS 3998 STANDARD

MANY HAPPY REFERENCES AVAILABLE ON REQUEST

Tel: 01638 742319

Mob: 07811 132709

[WWW.LLOYDSGARDENS.ME.UK](http://WWW.LLOYDSGARDENS.ME.UK)



Not far away from us is the village of Haslingfield where some of us went the other week to watch a production of 'Stepping Out' – about the trials and tribulations of a local tap dancing group - with a virtually all-female cast of ten. The group known as Haslingfield Light Theatre (HLT) had attracted full houses all week and is part of a community forum known as the Haslingfield Village Society. I would recommend anyone wanting to know more about this and similar organisations to look them up on the Net to see the variety of projects they undertake for their local community.

Bottisham did in fact have a vaguely similar forum specifically set up for the new Millennium in 2000 but the departure of a leading figure saw this fold for lack of leadership. Should a similar 'community forum' ever be considered for Bottisham it could for example inspire action in support of local clubs, societies and groups, even help form new groups to reflect the changing diversity of our rural community. A 'community forum' could even spearhead and develop ideas for improved community cohesion leading to an enriched community spirit. An annual 'Harvest Feast' is one such initiative that several rural communities seem to put on comprising a Hog Roast, Ceilidh and a display of farm animals and machinery, etc.

And on the subject of farming and animals the village may be about to lose its only remaining natural 'meadow'. Some of you may have read about this in the Newmarket Journal or via Parish Council. And some will also remember this meadow being used for Donkey Derby's and for the Village Feast. For decades this local green space – sited at the eastern end of the village - has been the habitat of many animals comprising but not limited to; sheep, hedgerow birds, ground nesting birds, birds of prey, deer, insects, wild flowers, badgers, foxes and small mammals of all varieties. It also contains a number of what is left of our indigenous trees and ancient earthworks but not alas to my knowledge a 'great crested newt'!! It's as if other areas of the village have not already been identified for development where Greenbelt has been released on arable farmland specifically for this purpose – not a natural habitat such as meadow!

A recent report published by the UN has drawn attention to the devastating effects that the loss of such places is having on the natural world. It claims that one in four species of plant and animal life are now at risk of extinction. This comes on top of an international report and rising global concern saying how vital a natural habitat of flora and fauna are to this planet's ecosystem – and here we have a local example of a custodian of our countryside's ecology wanting to concrete over a meadow!!

Having found out from other communities about the awakening of their indigenous but once dormant potential I wonder how willing the hidden potential in Bottisham would be in trying to advance on what has recently been achieved to further community participation and to protect what little is left of our ecological rural heritage?

*JOW*

**"The way to change is through individual responsibility for taking action in your own community." - Jeff Bridges.**



# J&J DRAKE



## Fully approved electrical contractor

- All Work Certificated in Accordance with NICEIC
- Free no obligation quotations
- All aspects of electrical work undertaken such as re-wires, Periodic test and inspections, maintenance calls, New build Installations.
- However small you may consider your job it will be treated with the same attention to detail as every one of our jobs.

## Your Local Electrician

Unit 24, Hall Barn Road Industrial Estate, Isleham, Ely, Cambs. CB7 5RJ  
Contact us on: 01638 781567 / enquiries@jandjdrake.co.uk



## Specialists in Military Fine Art & Framing

- Gallery open by prior arrangement
- All types of framing undertaken to match your budget
  - Latest prints & rare secondary market art
  - Military art collections purchased
  - Find us on [Facebook](#)

## Gallery & Framing Services at 83 Longmeadow, Lode

[www.merlinaviationart.com](http://www.merlinaviationart.com)

Email: [hello@merlinaviationart.com](mailto:hello@merlinaviationart.com)

Tel: 01223 751545



BARCHESTER

*Celebrating life*



# Celebrating Life

Our homes are more than care homes. They're family homes.  
Friendly homes. Homes that provide tailored care, beautiful  
environments and choice in every meal or activity.

Places that celebrate the little things that  
mean everything – morning, noon and night.

**Visit us anytime for friendly advice and to look around.**  
**You can also find helpful information at [www.barchester.com](http://www.barchester.com)**

**Hilton Park Care Home**  
Bottisham, Cambridge, CB25 9BX  
Tel: 01223 663 029

**Oaklands Care Home**  
Bottisham, Cambridge, CB25 9BX  
Tel: 01223 663 015

**Nursing care • Dementia care • Respite care & short breaks**  
**En-suite rooms • Landscaped gardens • Salon • Wi-fi**

# REFLEXOLOGY

For Health and Vitality

Reflexology has been  
an effective treatment for:

- Migraine • Back Pain • Infertility • Arthritis
- Sleep Disorders • Hormonal Disorders (Including PMT) • Sports Injuries • Digestive Disorders • Relaxation • Stress Related Conditions (exams, work, home, life) • Little people in nappies! (BabyFlex) • Men and Women, young and old.

**Jennie A Fatibene** MAR MBFVEA

Tel: 01223 811045

**\*\* Gift vouchers available \*\***



We provide a full range of  
computer repairs and information  
technology support services to  
businesses and home users.

- VIRUS & SECURITY • EMAIL & INTERNET
- BROADBAND • WIRELESS • ROUTERS
- NETWORKS • SERVERS • UPGRADES
- REPAIRS • NETWORK CABLING

Tel/Fax: **01638 742702**

Mobile: **07901 556895**

support@burwellcomputers.co.uk  
www.burwellcomputers.co.uk

**At Wired we don't have problems - only solutions**



We offer solutions for all your Aerial, Freesat, CCTV, Telephone  
and Data Cabling needs.

No job is too big or too small for our engineers.

With no call centres, you will be able to speak directly to the engineer.

We offer an efficient, cost effective and friendly service.

Contact us now for a no obligation quote.

**Contact us NOW for a free no obligation quote**

**01638 281234 / 07761 572186**

www.allwired.co.uk

info@allwired.co.uk





# **My Village Handyman** *Services*

- DIY repairs and odd jobs
- Painting & Decorating
- Tiling, Flooring & Patios
- Gardening, Landscaping, Fencing & Decking
- Kitchen & Bathroom installation
- Brickwork, Dry Walling and Small Builds
- Carpentry and Plumbing
- Window and Gutter cleaning
- Jet wash and Patio cleaning
- Rubbish clearance and Tip runs
- Carpet cleaning and Wood Floor staining
- New doors or locks
- TV and Audio Installations
- Security and Garden lighting
- **No job is too Small or too Big!**

Free no obligation quotes and advice provided  
Your very local Handyman from Great Wilbraham



Contact us to arrange a visit or quote  
**07484 637084** or **01223 881700**

Email: [info@myvillagehandyman.com](mailto:info@myvillagehandyman.com) | [www.myvillagehandyman.com](http://www.myvillagehandyman.com)

# HARRISONS OF BURWELL LTD

## Plumbing and Heating

**FREE ESTIMATES GIVEN**

Gas Boiler Servicing

**Clarence House, 7 Ness Road, Burwell, Cambs CB25 0AA**  
**Telephone: Newmarket 01638 742873 - Mobile 07932 773515**  
**email: [harrisonsofburwell@gmail.com](mailto:harrisonsofburwell@gmail.com)**

Gas Safe Registered

# HAYDEN

**THE CLEANING SPECIALIST**

Merrywood  
8 Lode Rd. Bottisham CB25 9DJ  
01223 813766 or 07919561665  
Email: [hayden.woodruff@btinternet.com](mailto:hayden.woodruff@btinternet.com)

WOULD YOU LIKE YOUR CARPETS  
OR UPHOLSTERY CLEANED?

HAYDEN IS LOCAL TO THE AREA,  
OFFERING FREE QUOTATIONS  
AND ADVICE

WE ALSO CLEAN WINDOWS WITH  
OUR NEW REACH AND WASH  
SYSTEM OR TRADITIONAL, YOUR  
CHOICE

## k-domestic electrical solutions

Complete Installations & rewires

Small and large alterations

Lighting

Internal & External work

PAT testing

Periodic Inspection & Reports

Full Inspection, Testing,  
Verification & Certificate issue

LED

Under Floor Heating

Voltage Optimization

your **local** electrical service of choice and recommendation

**Karl Howe**

**01638 610438 M: 07541 008613**

Email: [enquire@k-elecsolutions.com](mailto:enquire@k-elecsolutions.com) Website: [www.k-elecsolutions.com](http://www.k-elecsolutions.com)

Fully qualified Part P and 17th Edition

**City &  
Guilds**  
Qualified



# NEED A NEW FENCE ?

- Reliable local company. Established 2007.
- Over 1000 local installations.
- Choice of colours & sizes.
- NEVER PAINT A FENCE AGAIN.
- Will withstand storm force winds.
- 25 years guaranteed product.
- Numerous local testimonials available.



For a **free, no obligation**, site survey and quote.

Call us now on 01223 811160

[www.colourfencecambs.co.uk](http://www.colourfencecambs.co.uk)

## Bottisham Vehicle Services Ltd.

Reliable, Friendly, Professional

Service and repairs to all makes,  
MOT testing, tyres, air conditioning  
Courtesy car available  
Local collection and delivery

10 Tunbridge Lane, Bottisham, Cambridge CB25 9DU  
01223 811919 • [simon@bvsltd.net](mailto:simon@bvsltd.net) • [www.bvsltd.net](http://www.bvsltd.net)

## *'Your Friendly, Local Wood Burning Stove Specialist'*



### **VISIT OUR SHOWROOM!**

**Anglesey Farm  
Fen Road  
Lode  
Cambridge  
CB25 9HD**

**Monday – Closed**

**Tuesday – 10.00 – 2.00pm**

**Wednesday – 10.00 – 2.00pm**


**Thursday – 10.00 – 2.00pm**

**Friday – Closed**

**Saturday – See Website**

**Sunday – Closed**

***(Appointment Only At Other  
times. Please Check our Website  
For Saturday Opening &  
Changes in School Holidays)***

 **01223 703184**

Email: [sarah@cambridgestoves.co.uk](mailto:sarah@cambridgestoves.co.uk)

[www.cambridgestoves.co.uk](http://www.cambridgestoves.co.uk)

**CALL NOW FOR YOUR FREE, NO  
OBLIGATION SURVEY AND  
QUOTATION, OR CALL IN AT OUR  
SHOWROOM**

**ALL ASPECTS OF BUILDING WORKS TO  
YOUR FIREPLACE UNDERTAKEN**

**FAST, RELIABLE AND EFFICIENT  
SERVICE CARRIED OUT BY QUALIFIED  
HETAS ENGINEERS**

**LARGE SELECTION OF WOOD  
BURNING STOVES AND FIRESIDE  
ACCESSORIES ON DISPLAY**



# MOBILITY EQUIPMENT

STAIRLIFTS, SCOOTERS, WHEELCHAIRS, RISING CHAIRS AND  
BEDS, WALKERS, TOILET & BATHING AIDS, KITCHEN &  
HOUSEHOLD AIDS, CONTINENCE CARE, FOOTWEAR

SPARES, SERVICE, HIRE OF EQUIPMENT  
HOME VISITS AVAILABLE  
FRIENDLY AND CONSIDERATE SERVICE GUARANTEED



SCOTSDALES GARDEN CENTRE  
HORNINGSEA  
CB25 9JG  
01223 863908  
[www.orchard-mobility.co.uk](http://www.orchard-mobility.co.uk)

Monday to Saturday 9.00 – 5.00

## Bottisham Parish Council

### CHAIR

JON OGBORN

### VICE CHAIR

WILLIAM CLARKE

### PARISH COUNCILLOR

CHRISTINE BRYANT  
HILDA BUCHANAN  
LINO DI LORENZO  
PETER MARTIN  
STEVEN O'DELL  
DISTRICT COUNCILLO  
CHARLOTTE CANE

JOHN TRAPP

### COUNTY COUNCILLOR

MATHEW SHUTER

### PARISH CLERK

CLAIRE FULLWOOD

## BOTTISHAM COMMUNITY LIBRARY ASSOCIATION

### LIBRARY OPENING HOURS

Monday	Closed
Tuesday	3-5pm and 6-8pm
Wednesday	10-11.30am
Thursday	3-5pm
Friday	6-8pm
Saturday	10am-12noon

*Working in Partnership with the  
County Library Service.*

# Useful Information

<b>Bottisham Website:</b>	WWW.BOTTISHAMPC.CO.UK
<b>Holy Trinity Church:</b> Revd Sue Giles	812726
<b>Roman Catholic Priest:</b> Monsignor Eugène Harkness. Parish of St Philip Howard	01223 211235
<b>RE:NEW/Lode Chapel:</b> Rev. Alan Brand	01223 812558
<b>Bottisham Surgery:</b>	
Enquiries and Appointments	810030
Out of Hours only - Urgentcare Cambridge	111
<b>Bottisham Library:</b>	812354
Library hours: Monday Closed; Tuesday 3-5pm and 6-8pm; Wednesday 10-11.30am	
Thursday 3-5pm; Friday 6-8pm; Saturday 10am-12noon	
<b>Cambridgeshire Police HQ:</b>	01480 456111
<b>Cambridgeshire Police:</b> (NON-URGENT MATTERS) ring 101 - In EMERGENCIES ring 999	
Police community support officer Ann Austin PCSO 7353 at Ely Police Station ...Contact through 101	
<b>1st Bottisham Rainbows/1st Bottisham Brownies:</b> Kay Pearce	811055
<b>Bottisham &amp; District Gardening Club:</b> Secretary: Tricia McLaughlin	811072
<b>Bottisham Bowling Club:</b> Keith Gibson, Secretary	811049
<b>Bottisham Carpet Bowls Club:</b> Nora Watson	812121
<b>Bottisham Community Primary School:</b>	811235
<b>Bottisham Cricket Club:</b> Martin Wilson	07768 031979
Chairman: Will Allen	07801 580604
<b>Bottisham Local Charities Trustees:</b> Clerk - Coral Hatley	811457
<b>Bottisham Pharmacy:</b>	812321
<b>Bottisham Pool Association:</b> Manager - Jason Rye	811121
<b>Bottisham Royal British Legion Branch:</b> Secretary. Peter Walker	811402
Branch Chairman: Dave Frost	www.Britishlegion.org.uk/branches/bottisham
<b>Bottisham Scout Group:</b> Group Contact: Linda Jones	813040
<b>Bottisham Community Sports and Social Club:</b> Secretary Graham Darling,	
Bottishamcsasc@gmail.com	812063
<b>Bottisham Village College, School:</b>	811250
Evening Classes, Clubs and Youth Club Information	811372
<b>Bottisham W.I.:</b> Secretary - Jenn White • mrandjw@btinternet.com	811600
<b>Bottisham Youth Football Club:</b> Jim Tideswell	812591
<b>Cambridgeshire County Councillor:</b> Mathew Shuter	01638 508729
<b>East Cambridgeshire District Offices:</b>	01353 665555
<b>East Cambridgeshire District Councillors:</b> Charlotte Cane 34 Swaffham Road, Reach	07976 607512
John Trapp 104 Commercial End, Swaffham Bulbeck	01223 812120
<b>Girlguiding Bottisham District:</b> Cambs East County office • www.cambseastguides.org.uk	01223 813917
<b>Parish Council Chairman:</b> Jon Ogborn	07486 372780
<b>Parish Council Clerk:</b> Claire Fullwood	07914 219732
<b>Queen's Court Day Centre:</b>	811905
<b>MP for Cambs South East Constituency:</b>	
Lucy Frazer, House of Commons, London SW1A 0AA	
E. lucy.frazer.mp@parliament.uk W. www.lucyfrazer.org.uk	
<b>Cambridgeshire Trading Standards Helpdesk:</b>	0845 3030666
<b>Saplings Playgroup Playhut:</b>	813226
<b>Milton Road Tip:</b> Apr to Sept - Weekdays 9.00am-8.00pm: Weekends 9.00am-6.00pm	860674
Oct to Mar - 9.00am-4.00pm	
<b>CRESSSET Editor:</b>	email: BottishamCresset@gmail.com
<b>Treasurer, Advertising rates and payment:</b> Rhona Walker, 94 High Street, Bottisham	811402
<b>Distribution:</b> Ian & Helen Cole	812573
<b>Design/Artwork:</b> ONG (Old Newton Graphics) • www.codge.com	01449 675548

**The Cresset:** While every effort is made to ensure accuracy we cannot accept liability for any mistakes or misprints. The views of, or any opinions expressed, are **not** those of the EDITOR. The Editor cannot accept any responsibility for statements made in advertisements.



# **MANCHETTS**

**Car Truck & Van Centre**



# **Van Hire from £49**

**01638 661113**

***www.manchetts.co.uk***

*1 Victoria Way Studlands Industrial Estate Newmarket Suffolk CB8 7SH*

# E.C. AUTOCARE

(Est. 1980)



**SERVICING & REPAIRS**  
**Cars & Light Commercial**  
**Diesel & Petrol**



## MOT TESTING STATION

**Servicing to all makes of Cars  
& Light Commercial**

- ✚ **ENGINE MANAGEMENT DIAGNOSTICS**
- ✚ **TYRE - BRAKES - EXHAUSTS**
- ✚ **AIR CONDITIONING SERVICING**
- ✚ **GEARBOX SPECIALISTS** MANUAL & AUTOMATIC

**FAST, FRIENDLY, FAMILY BUSINESS**

**56 HIGH STREET, BOTTISHAM**

Also at

**A1303 SERVICE STATION, BOTTISHAM**  
**(behind Brian McKay)**

**Tel. 01223 811122 or 01223 812357**

